



Turbines without a dark side





syneco^{VISION}

The instrument range that meets the highest demands.
High-end turbines with ultimate technology!

syneco^{FUSION}

The instrument range for maximum economy.
Proven Syneca quality is more accessible than ever before, whatever your budget!

Turbines that meet the highest demands

High-end technology for excellent preparation results: Both of the Synea turbine lines are characterised by high performance, optimal ergonomics and outstanding value for money. Synea Vision is symbolic of innovations such as the sterilizable 5x Ring LED+ and Synea Fusion promises top quality combined with unbeatable cost-efficiency.



Ergonomic, lightweight and quiet

Relaxed, fatigue-free working with noticeably more lightweight turbine system.



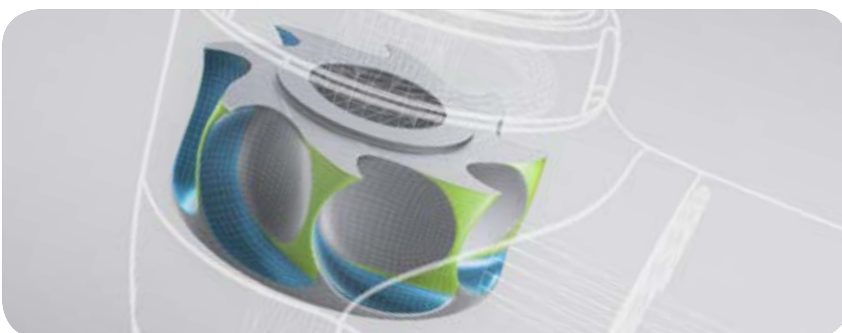
See better

Optimal contrast and natural illumination with maximal colour rendering with LED+.



Optimum cooling

Thanks to the 4x or 5x spray, the bur tip is optimally cooled in every application position.



Full steam ahead with the Power Blade rotor

The optimized blade geometry allows higher rotor efficiency. For maximum torque and optimal power throughout preparation.



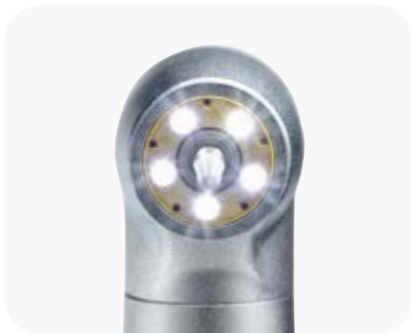
Patented hygienic head system

The circulating air in the turbine head ensures no aerosol particles are sucked into the turbine as the rotor slows down.

Synea Vision: The dream that has become reality



The world's first sterilizable turbine handpieces with 5x Ring LED+ not only amaze with their shadowless illumination, but prove to be turbines of the highest quality in all other respects too. Discover a completely new working experience – with absolutely no shadows.



Comfort to the power of 5!

Five LEDs and five spray ports revolutionise visual comfort and ease of use.



Synea Vision Ring LED+

Shadowless illumination of the treatment size with the unique 5x Ring LED+.



Synea Fusion in comparison with

basic LED+.

Further advantages at a glance

- > Outstanding ergonomics
- > Low weight
- > Best balance
- > Non-slip grip profile
- > Especially quiet rotor
- > Low-noise operation
- > Ceramic ball bearings
- > Hygienic head system
- > Long service life
- > Quality made in Austria
- > Thermo washer disinfectable and sterilizable



Tailor-made turbines

The right head size for optimal access to the treatment site in every application.

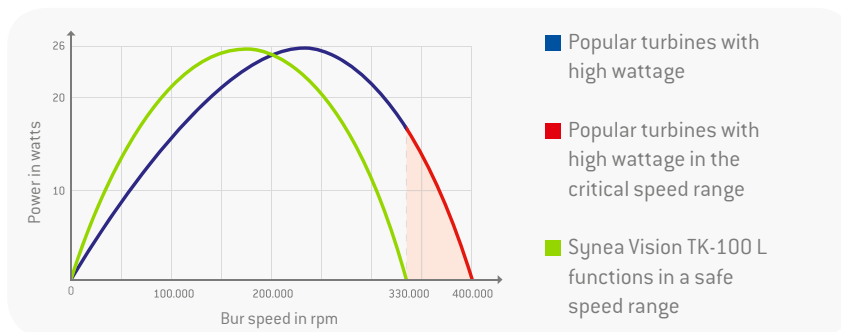


Extraordinary value retention

Like new every day with the special, scratch-resistant coating.

Synea Vision: Power turbine TK-100 L and microturbine TK-94 L

The TK-100 L is the power turbine with absolutely no shadows. It offers extra high performance without undesirable side effects such as high wear and tear or air escaping from the head of the turbine. With its extra small head, the TK-94 L is perfect for minimally invasive procedures and provides optimal access to the treatment site.

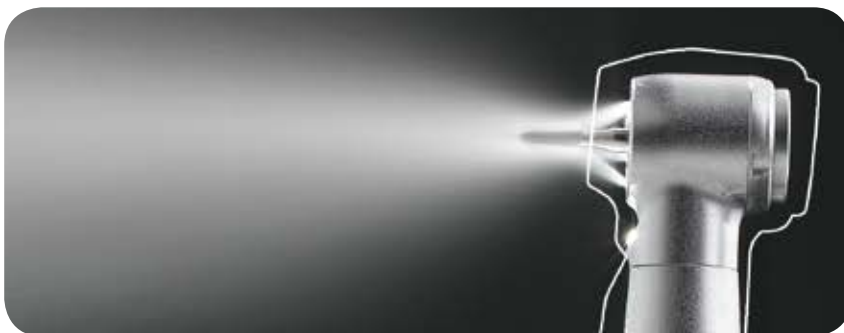


Service life with no compromises

Improved performance due to optimal use of the torque without exhausting the maximum speed. This reliably ensures high power and is gentle on the rotor's ball bearings for a long time.

Hygiene with no compromises

Minimal escape of air at the head maximum capacity for added efficiency and unbeatable hygiene.



Tiny head, great advantages

With a head diameter of only 9 mm and an overall head height of 17.2 mm with a 16 mm bur attached...

...patients with a limited access, such as children and the elderly, benefit especially.



»The innovative lighting concept of the W&H turbine with 5x Ring LED+ ensures full light intensity at the treatment point even under difficult conditions.«

Dr. med.dent. Martin Schiff,
Salzburg, Austria

»The Synea Vision turbine is perhaps one of the best handpieces I have ever used. This is attributed to its lightweight, excellent torque and superb ring LED+ light source especially in very difficult to see areas in the posterior part of the mouth.«

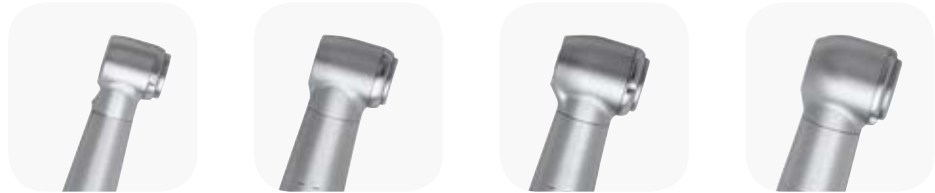
Dr. Sunil Hirani BSc (Hons), BDS, MSc, FDSRCS (Eng), MOrthRCS (Eng),
FDS (Orth) SmileLux, Milton Keynes, United Kingdom



»Excellent torque supports efficient removal of natural tooth substance as well as high-strength denture materials.«

Dr. Mats Bäckström, Falun,
Sweden

Synea Vision: Technical data



Types with integrated ceramic ball bearings:	TK-94 L / TK-94 LM	TK-97 L / TK-97 LM	TK-98 L / TK-98 LM	TK-100 L / TK-100 LM
Light:	LED+ / compact glass rod	Ring LED+ / compact glass rod	Ring LED+ / compact glass rod	Ring LED+ / compact glass rod
CRI (LED version):	> 90	> 90	> 90	> 90
Colour temperature: (LED version):	5,500 K	5,500 K	5,500 K	5,500 K
Luminous flux (lumens):	6.0 / 4.0**	6.0 / 4.0**	6.0 / 4.0**	6.0 / 4.0**
Illuminating power:	25,000 lux	25,000 lux	25,000 lux	25,000 lux
Coupling:	1 Roto Quick 2 Multiflex®***	1 Roto Quick 2 Multiflex®***	1 Roto Quick 2 Multiflex®***	1 Roto Quick 2 Multiflex®***
Head size:	Ø 9 mm	Ø 10 mm	Ø 11,5 mm	Ø 13 mm
Head height:	17,2 mm (with bur 16 mm)	21,1 mm (with bur 19 mm)	21,4 mm (with bur 19 mm)	21,4 mm (with bur 19 mm)
Power*:	14 W	21 W	24 W	26 W
rpm (min ⁻¹):	410,000	400,000	360,000	330,000
Rotary instruments:		FG bur, as per ISO 1797-1, with Ø 1,6 mm		
Max. operating part diameter:	1,5 mm	2 mm	2 mm	2,5 mm
Max. length:	16 mm	21 mm	25 mm	25 mm
Weight:	39 g / 67 g	38 g / 68 g	40 g / 69 g	40 g / 70 g
Roto Quick connection operating pressure:	3 ± 0,3 bar	3 ± 0,3 bar	3 ± 0,3 bar	3 ± 0,3 bar
Multiflex® connection operating pressure:	2,5 to 4 bar	2,5 to 4 bar	2,5 to 4 bar	2,5 to 4 bar
Spray outlets:	5x	5x	5x	5x
Volume:	59 dB (A)	57 dB (A)	57 dB (A)	57 dB (A)

* Performance value applies at a rated pressure of 3 bar and exhaust air pressure of max. 0.2 bar

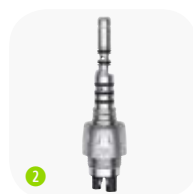
** Values apply for use of RM-34 LED with DC power supply

*** Multiflex® is a trademark of a third party not affiliated with W&H Dentalwerk Bürmoos GmbH



W&H Roto Quick couplings enable the versatile use of instruments with Ring LED+, LED+, LED and halogen light

- > Click and pull
- > Continuous regulation of the spray water supply
- > Clean head system
- > Sterilizable
- > 24-month guarantee



W&H RM-34 LED coupling for Multiflex® connection

- > Use of LED without requiring changes to an optic dental unit
- > Long LED service life
- > Continuous regulation of the spray water supply
- > Clean head system
- > 24-month guarantee

Synea Fusion: Synea turbines with maximum efficiency



User comfort with no compromises and top performance combined with outstanding cost-efficiency: Discover the advantages of the new Synea Fusion line!

Further advantages at a glance

- > Outstanding ergonomics
- > Low weight
- > Especially quiet rotor
- > Low-noise operation
- > Ceramic ball bearings
- > Hygienic head system
- > Long service life
- > Quality made in Austria
- > Thermo washer disinfectable and sterilizable



Experience LED+

Excellent illumination with natural colour rendering and optimal positioning of the LED.



Optimum cooling of four sides

Constant cooling and optimal cleaning of the treatment site thanks to 4x spray.



The choice is yours

Choose between the two different head sizes and then select the connection which suits your coupling system. The W&H Roto Quick offers you unbeatable LED+ light and convenient 360° rotation.

Synea Fusion: Technical data



Types:	TG-97 L / TG-97 L RM / TG-97 LM / TG-97 L N / TG-97	TG-98 L / TG-98 L RM / TG-98 LM / TG-98 L N / TG-98
Light:	LED + / LED + / compact glass rod / compact glass rod / -	LED + / LED + / compact glass rod / compact glass rod / -
CRI (LED version):	> 90	> 90
Colour temperature (LED version):	5,500 K	5,500 K
Luminous flux (lumens):	6.0 / 6.0 / 4.0** / depending on coupling / -	6.0 / 6.0 / 4.0** / depending on coupling / -
Illuminating power:	25,000 Lux	25,000 Lux
Coupling:	<ol style="list-style-type: none"> 1 Roto Quick RM-connection 2 Multiflex®*** NSK Mach®*** 	<ol style="list-style-type: none"> 1 Roto Quick RM-connection 2 Multiflex®*** NSK Mach®***
Head size:	Ø 10 mm	Ø 11.5 mm
Head height:	21.1 mm (with bur 19 mm)	21.4 mm (with bur 19 mm)
Power*:	18 W	21 W
rpm (min ⁻¹):	390,000	360,000
Rotary instruments:	FG bur, as per ISO 1797-1, with Ø 1,6 mm	
Max. operating part diameter:	2 mm	2 mm
Max. length:	21 mm	25 mm
Weight:	40 g / 43g / 68 g / 52 g / 40 g	42 g / 44 g / 70 g / 53 g / 42 g
Roto Quick connection operating pressure:	3 ± 0,3 bar	3 ± 0,3 bar
Multiflex® connection operating pressure:	2.5 to 4 bar	2.5 to 4 bar
Spray outlets:	4x	4x
Volume:	59 dB (A)	59 dB (A)

* Performance value applies at a rated pressure of 3 bar and exhaust air pressure of max. 0.2 bar

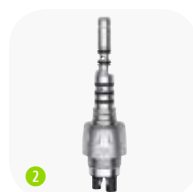
** Values apply for use of RM-34 LED with DC power supply

*** Multiflex® and NSK Mach® are trademarks of third parties not affiliated with W&H Dentalwerk Bürmoos GmbH



W&H Roto Quick couplings enable the versatile use of instruments with Ring LED+, LED+, LED and halogen light

- > Click and pull
- > Continuous regulation of the spray water supply
- > Clean head system
- > Sterilizable
- > 24-month guarantee



W&H RM-34 LED coupling for Multiflex® connection

- > Use of LED without requiring changes to an optic dental unit
- > Long LED service life
- > Continuous regulation of the spray water supply
- > Clean head system
- > 24-month guarantee

Hygiene & maintenance of your turbines



W&H Technical Service

»The better the care, the longer the pleasure.«
Regular cleaning and care of your instruments protects them against premature wear and unnecessary service costs.



You can find the exact work process for preparation of transmission instruments and motors at wh.com.

Sterilization in record time

Cleaned, serviced, sterilized. The Assistina 3x3 cleaning process, in combination with the Lisa fast cycle, reduces the overall preparation time. You can use the instruments again after only 19 minutes.



Wipe disinfection

Disinfect the instruments before cleaning and servicing by wiping them.

Cleaning and care

The Assistina 3x3 cleans and services three instruments inside and outside in just 6 minutes.

Sterilization

With the Lisa fast cycle, the instruments can be removed from the sterilizer ready for use after only 13 minutes.



Maintenance at the press of a button

The validation of the cleaning process is confirmed by expert opinion and can be viewed at wh.com.



Assistina 3x2

The Assistina 3x2 prepares instruments in two stages: internal cleaning, lubrication.



Assistina TWIN

First reprocessing device for dental instruments which is equipped with two process chambers that can be used alternately.



W&H Augmented Reality (AR) combines the real world and the virtual world – a unique experience. The future starts now!



Scan the QR code with your mobile phone for more information on Synea turbines

Pictures are for illustrative purposes only. Additional equipment and accessories shown are not included as standard.



Bring Synea Vision to life!

Download the »W&H AR« App to your smartphone or tablet PC free of charge from Google Play (for Android) or the Apple App Store. Open the App and hold your device 50 cm from the picture.

W&H Dentalwerk Bürmoos GmbH
Ignaz-Glaser-Straße 53, Postfach 1
5111 Bürmoos, Austria
t + 43 6274 6236-0
f + 43 6274 6236-55
office@wh.com
wh.com