

www.acteongroup.com

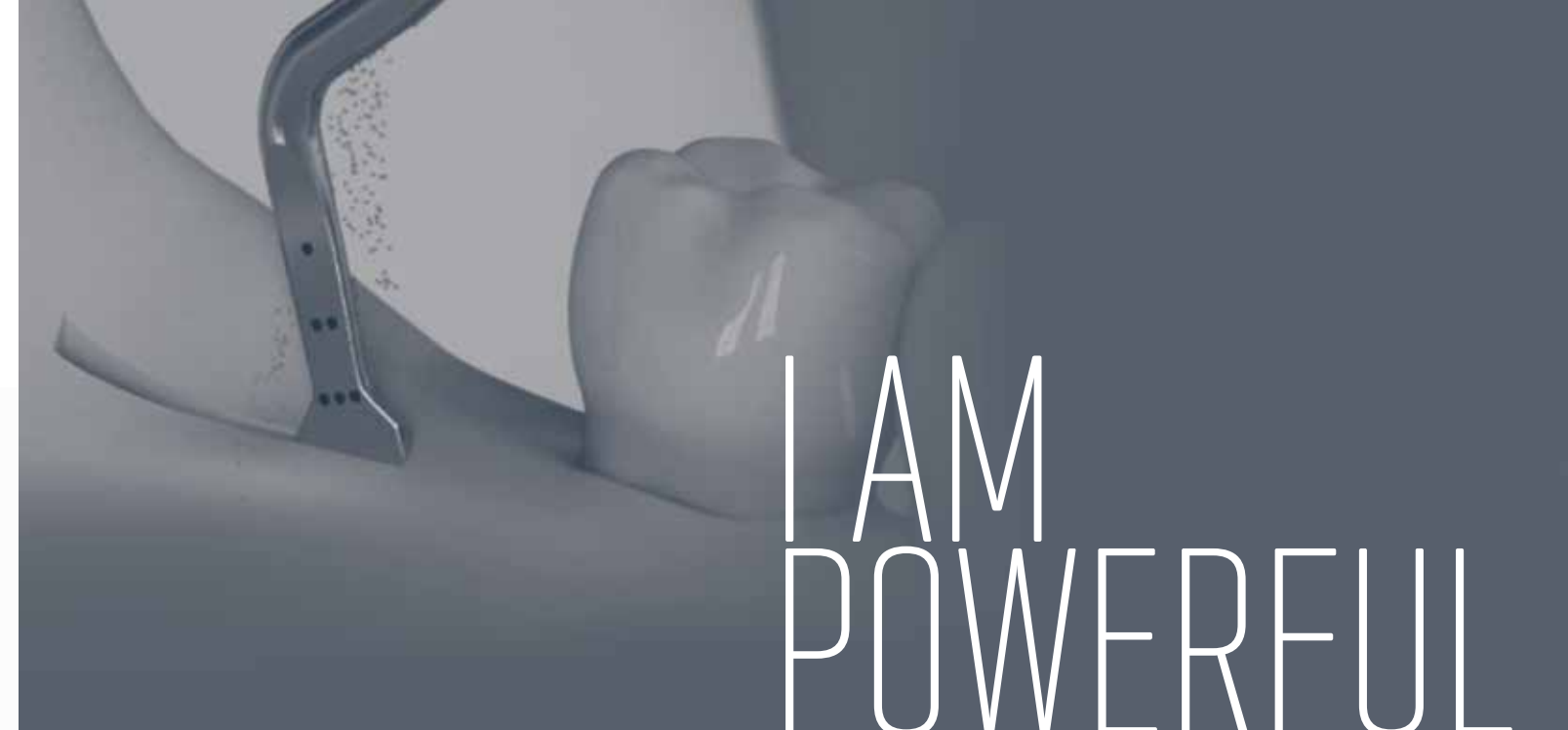


Watch our Youtube channel:
www.youtube.com/user/acteonsatelec

Class IIa medical devices (GMED) - CE0459
Manufacturer: SATELEC® - France.
For dental professional use only.

SATELEC® S.A.S | A Company of ACTEON® Group
17 avenue Gustave Eiffel | ZI du Phare | 33700 MERIGNAC | FRANCE
Tel + 33 (0) 556 340 607 | Fax + 33 (0) 556 349 292
E-mail: info@acteongroup.com | www.acteongroup.com

Non contractual document - Ref. D00611 - V5 - 03/2019 - Copyright © 2019 SATELEC® - All rights reserved. No information or part of this document may be reproduced or transmitted in any form without the prior permission of ACTEON®.



SURGERY TIPS
Power & Security



EN



EFFICIENT SURGICAL TIPS, GUARANTEE OF QUALITY

An approach supported by R&D, many partnerships with clinicians, universities and international laboratories enable us to develop a unique expertise and worldwide recognized innovative clinics.

COMBINE ROBUSTNESS AND PRECISION

ACTEON® surgical tips are made of a medical grade steel. Valued for their durability and shapes adapted to each anatomical context, they fully meet the requirements of the surgical environment.

Innovative and reliable, they are:

- Designed using high-tech CAD software,
- Manufactured at the ACTEON® headquarters in Mérignac (Bordeaux, France) on high-precision equipment,
- Strengthened by specific heat and surface treatment processes,
- Tested to measure its efficiency, spray and acoustic performance.

Contents

P. 4-5

THE MOST COMPLETE,
EFFICIENT & SECURE RANGE

P. 6-7

EXTRACTION KIT - BONE SURGERY KIT

P. 8-9

CREST SPLITTING KIT - PIEZOCISION™ KIT

P. 10-11

INTRALIFT™ KIT - SINUS LIFT KIT

P. 12-13

CROWN EXTENSION KIT - ESSENTIAL KIT

P. 14-15

RECOMMENDED SETTINGS

Exclusive and patented, Newtron® technology brings to treatments more preservation, efficacy and comfort.

- Preservation
 - ✓ soft tissue
 - ✓ minimal bone loss
- Efficacy
 - ✓ frequency adjustment
 - ✓ power regulation
- Comfort
 - ✓ Security and effortless

NEUTRON
TECHNOLOGY

CLINICAL BENEFITS

The benefits of Piezotome® power ultrasonic applied to the surgical field have been widely demonstrated by numerous clinical studies*:

- Safety cut
- Gain of bone volume
- Optimal visibility
- Superior healing
- Reduced post-operative pain
- Comfort for both patient and practitioner

Only our industrial procedures and strict quality control can guarantee perfect tip adaptation on our ultrasonic generators. The electronics module, the handpiece and the tip are designed to interact in harmony and deliver optimum performance for you and your patients.

IMPORTANT*: Surgical tips designed for Piezotome® Solo, Piezotome® 2 and Implant Center™ 2 cannot be used with Piezotome, Implant Center and vice versa.

• **Black reference (generation II) :**
Piezotome® Solo (LED),
Piezotome® 2,
Implant Center™ 2
Piezotome® Cube

• **Blue reference :**
Piezotome®
Implant Center™



- Compendium PIEZO ULTRASONIC SURGERY
- In Vivo Assessment of Bone Healing following Piezotome Ultrasonic Instrumentation, J. Reside, E. Everett, R. Padilla, R. Arce, P. Miguez, N. Brodala, I. De Kok, S. Nares, Clinical Implant Dentistry and Related research, June 2013.
- Ultrasonic Piezotome surgery: is it a benefit for our patients and does it extend surgery time? A retrospective comparative study on the removal of 100 impacted mandibular 3rd molar, A. Troedhan, A. Kurrek, M. Wainwright, Open Journal of Stomatology, 2011.
- Piezotome Clinical Booklet

COMPLETE, EFFICIENT AND

SECURE RANGE

Extraction



SYNDESMOTOMY

For maximum bone preservation

BoneSurgery



OSTEOTOMY/OSTEOPLASTY

Clean and thin cut for maximal bone volume

CrestSplitting



CREST SPLITTING

Rapid and minimally invasive technique for controlled expansion

PiezoCision



ACCELERATED ORTHODONTIC SURGERY

Micro-incisions to ease orthodontic tooth movement

IntraLift



CRESTAL SINUS LIFT

Minimally invasive surgery for smooth sinus floor fracture

SinusLift



LATERAL SINUS LIFT

Unbeatable comfort: selective and haemostatic cut

CrownExtension



CROWN EXTENSION

Incomparable precision and accessibility

Essential



THE ESSENTIAL

The 6 fundamental ACTEON® Equipment tips

FOR GENTLE EXTRACTIONS

THINNESS AND SECURITY



Extraction

SYNDESMOTOMY: ANTERIOR AREA

LC1
Ultrasonic periosteal intended for syndesmotomy and periradicular osteotomy.

LC2
Tip, particularly slim, allows access to the tight spaces between the root and the alveolar bone.

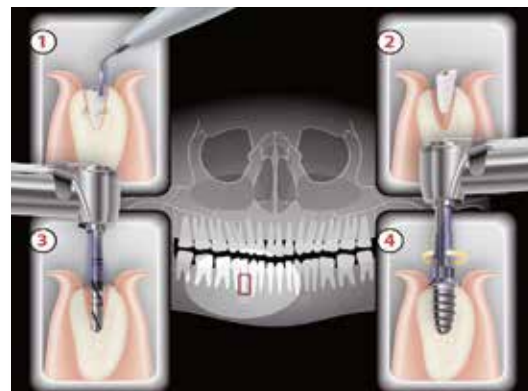
SYNDESMOTOMY: POSTERIOR AREA

LC2L
Left-oriented at 45° tip facilitates access to the posterior areas.

LC2R
Right-oriented at 45° tip facilitates access to the posterior areas.

ROOT SECTION

Ninja®
Saw-tooth tip particularly efficient for hemisections and root amputations.



Extraction Kit

Widening the ligamentary space. LC tips separate the tooth from its attachment system for a rapid extraction, with less luxation, keeping intact the alveolar bone edge. Surgeries: extraction of ankylosed roots, fractured, impacted teeth, wisdom teeth, etc.



EXTRACTION Kit:
F87546: LC1 II, LC2 II (x2), LC2L II, LC2R II, NINJA® II, an autoclavable metal support, an universal wrench
F87346: LC1, LC2 (x2), LC2L, LC2R, NINJA®, an autoclavable metal support, an universal wrench

EXTRACTION Pack:
F87540: An Extraction II kit, a sterilization box, a Piezotome® LED handpiece and its autoclavable cord, a dynamometric wrench
F87340: An Extraction kit, a sterilization box, a Piezotome® handpiece and its autoclavable cord, a dynamometric wrench

Bone Surgery

BONE HARVESTING

BS1S (Slim)
9mm saw intended for the in-depth cutting of very dense cortical bones.

BS2L
Left-oriented bone saw used for cutting the ramus cortical bone.

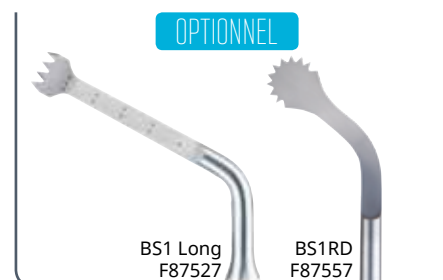
BS2R
Right-oriented bone saw used for cutting the ramus cortical bone.

BS1RD (not included in the kit)
Rounded saw, large 280° active surface

BS1L (Long) (not included in the kit)
15mm saw facilitating ramus bone grafting.

OSTEOTOMY

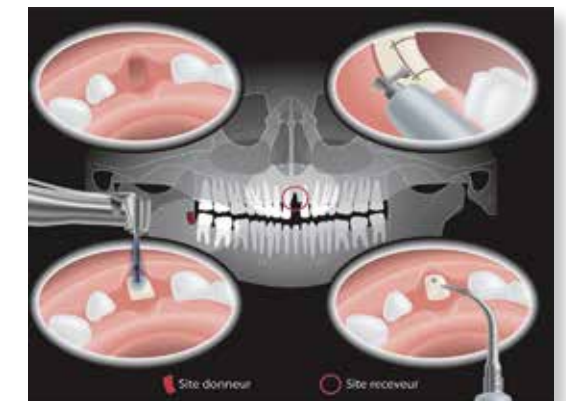
BS5
Flat scalpel for fine osteotomies.



OSTEOPLASTY

BS4
Circular scalpel for osteoplasty and harvesting of bone particles or chips.

BS6
Curved scalpel particularly recommended for osteoplasty.



Bone Surgery Kit: Osteotomy / Osteoplasty

Performing bone graft, allows cutting, excising and remodeling bone structures reducing the risk of soft tissue lesions.



BONE SURGERY Kit:
F87509: BS1S, BS2L II, BS2R II, BS4 II, BS5 II, BS6 II
F87309: BS1, BS2L, BS2R, BS4, BS5, BS6

BONE SURGERY Pack:
F87500: A Bone Surgery II kit, a sterilization box, a Piezotome® LED handpiece and its autoclavable cord, a dynamometric wrench
F87300: A BS kit, a sterilization box, a Piezotome® handpiece and its autoclavable cord, a dynamometric wrench

EASY & CONTROLLED TECHNIQUE

MINIMAL INCISIONS MINIMALLY INVASIVE



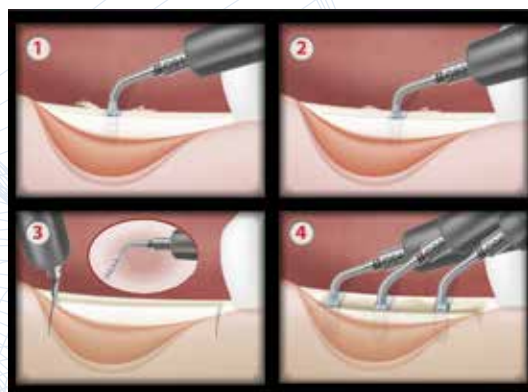
CrestSplitting

OSTEOTOMY

- CS1**
Fine tip dedicated to pilot osteotomy up to 8mm of depth.
- CS2**
Tip dedicated to the second osteotomy up to 8mm of depth.
- CS3**
Scalpel used for the discharges incisions in mesial and distal sides, up to 8mm of depth.

EXPANSION

- CS4**
Conical tip for bone expansion. Tip thickness: 1.80mm at 8mm.
- CS5**
Conical tip for bone expansion. Tip thickness: 2.75mm at 8mm.
- CS6**
Conical tip for bone expansion. Tip thickness: 3.75mm at 8mm.



Crest Splitting Kit

The increasing tips thickness allows a smooth crest expansion limiting the risk of bone fracture.



CREST SPLITTING Kit:
F87567: CS1, CS2, CS3, CS4, CS5, CS6, an autoclavable metal support, an universal wrench

CREST SPLITTING Pack:
F87560: A CS kit, a sterilization box, a Piezotome® LED handpiece and its autoclavable cord, a dynamometric wrench

PiezoCision

PZ1

Anterior corticotomies.

PZ2L

Lateral corticotomies on patient's right vestibular arch. To be used with pendulum motion.

PZ2R

Lateral corticotomies on patient's left vestibular arch. To be used with pendulum motion.

PZ3

Anterior corticotomies for root proximity concerns.

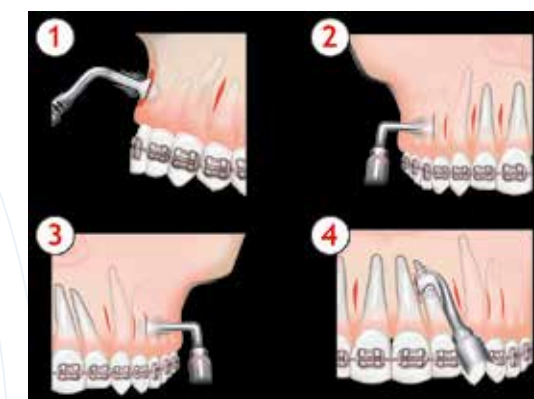
The 3mm necessary decortication depth is visible on each tip by a laser marking.

Piezocision™ technique is the combination of:

- micro-surgical incisions performed with Piezotome® powered ultrasonic generators, by ACTEON® Equipment,
- bone densification,
- orthodontic tooth movement.

INDICATIONS

- Class I malocclusions with moderate to severe crowding (non-extraction)
- Correction of deep bite
- Selected class II malocclusions
- Rapid adult orthodontic treatment
- Rapid intrusion and extrusion of teeth



Piezocision™ Kit: Accelerated Orthodontic Surgery

Treatment of malocclusions by ultrasonic corticotomies. Quick surgery, minimally invasive, flapless or sutureless for a greater acceptance of the treatment plan. Bone stimulated by micro-incisions accelerates tooth movement, the treatment is 3 to 4 times faster.*



Piezocision™ Kit:

F87576: PZ1, PZ2L, PZ2R, PZ3, an autoclavable metal support, an universal wrench

Piezocision™ Pack:

F87570: A Piezocision™ kit, a sterilization box, a Piezotome® LED handpiece and its autoclavable cord, a dynamometric wrench

* Acceleration of orthodontic tooth movement following selective alveolar decortication: biological rationale and outcome of an innovative tissue engineering technique, JD Sebaoun, J. Surmenian, DJ. Ferguson, S. Dibart, International Orthodontics, 6, 235-249, 2008.

FAST, SAFE AND MINIMALLY INVASIVE TECHNIQUE

FOR AN UNMATCHED VISIBILITY



IntraLift

PILOT DRILLING

TKW1

Conical and diamond-coated tip for pilot drilling in very dense cortical bone (Ø 1.35mm).

SECONDARY DRILLING

TKW2

Cylindrical and diamond-coated tip dedicated for drilling and fracturing the sinus floor (Ø 2.1mm).

TKW3

Cylindrical tip dedicated to drill and widen the access canal to sinus membrane (Ø 2.35mm).

TKW4

Cylindrical and diamond-coated tip intended for the receptacle preparation and widening the access canal to the sinus membrane (Ø 2.8mm).

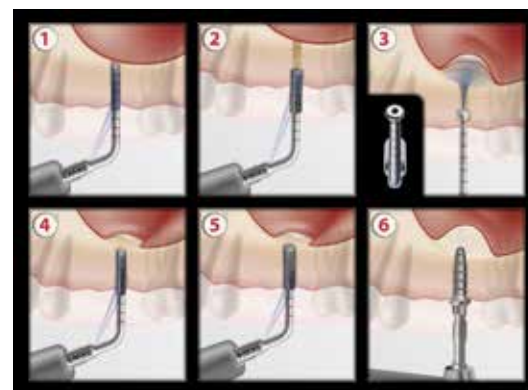
MEMBRANE ELEVATION

TKW5

Tip Ø 3mm to be placed in the receptacle preparation for sinus membrane elevation by crestal approach.

TKW6 (not included in the kit)

Tip Ø 4.2mm for sinus membrane elevation recommended for combined techniques.



OPTIONNEL

TKW6
F87538

SinusLift

VESTIBULAR BONE WINDOW CUT

SL1

Diamond-coated tip for vestibular bone window cut and for attenuation of sharp angles.

SL2

Diamond-coated ball tip for smoothing the vestibular bone window and precise osteoplasty.

MEMBRANE DETACHMENT

SL3

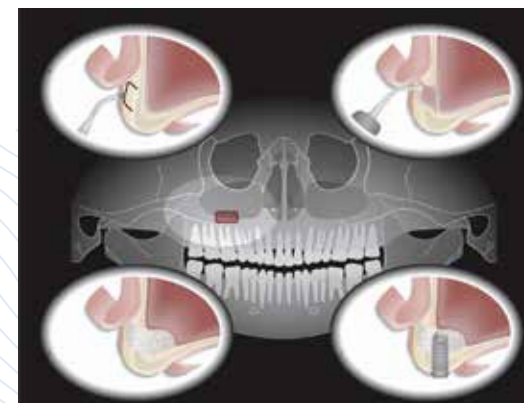
Plateau tip served for sinus membrane elevation on the window's edges.

SL4

Spatula served for sinus membrane elevation inside the sinus.

SL5

Spatula used for sinus membrane elevation inside the sinus and for disengagement of anatomical structures.



Intralift™ Kit

Sinus lift by the crestal approach: the IntraLift Kit makes it possible to perform non invasive surgery in full safety.



Intralift™ Kit:

F87536: TKW1 II, TKW2 II, TKW3 II, TKW4 II, TKW5 II, an autoclavable metal support, an universal wrench
F87336: TKW1, TKW2, TKW3, TKW4, TKW5, an autoclavable metal support, an universal wrench

Intralift™ Pack:

F87530: A Intralift™ II kit, a sterilization box, a Piezotome® LED handpiece and its autoclavable cord, a dynamometric wrench
F87330: A Intralift™ kit, a sterilization box, a Piezotome® handpiece and its autoclavable cord, a dynamometric wrench

Sinus Lift Kit

Lateral Sinus Lift: a thin cut performed without effort, limiting any risk of sinus membrane perforation or antral artery damage. The elevation is performed by keeping a permanent contact between the membrane and the bone lining.



SINUS LIFT Kit:

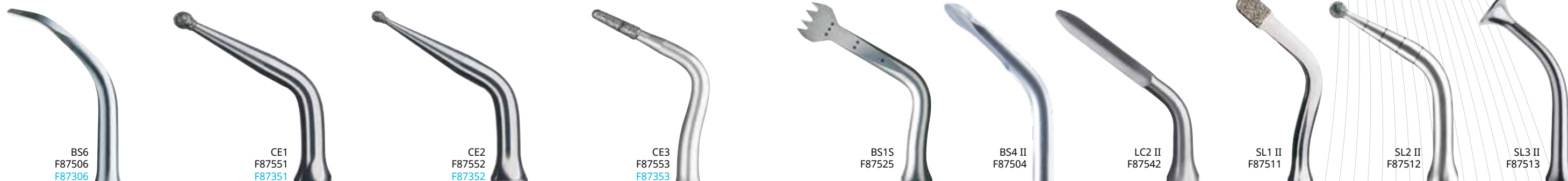
F87519: SL1 II, SL2 II, SL3 II, SL4 II, SL5 II, an autoclavable metal support, an universal wrench
F87319: SL1, SL2, SL3, SL4, SL5, an autoclavable metal support, an universal wrench

SINUS LIFT Pack:

F87510: A SL II kit, a sterilization box, a Piezotome® LED handpiece and its autoclavable cord, a dynamometric wrench
F87310: A SL kit, a sterilization box, a Piezotome® handpiece and its autoclavable cord, a dynamometric wrench

PRECISION & ACCESSIBILITY

SIMPLY INDISPENSABLE



CrownExtension

OSTEOPLASTY

BS6

Curved scalpel particularly effective for substantial osseous reshaping.

CE1

Diamond-coated spherical tip (Ø 1.75mm) designed for osteoplasty in oral and palatal zones.

CE2

Diamond-coated spherical tip (Ø 1.20mm) designed for osteoplasty in interproximal zones.

OSTEOECTOMY

CE3

For a fast restoration of the biologic width (laser mark placed at 3mm).

Used perpendicularly or parallel to the bone, this tip is designed for osteotomies of the tooth-supporting bone in interproximal and oral (vestibular) and palatal periradicular zones.



Crown Extension Kit

Completely innocuous to the gingiva guaranteeing the integrity of bone and adjacent teeth.



CROWN EXTENSION Kit:
F87554: BS6 II, CE1 II, CE2 II, CE3 II,
an autoclavable metal support, an universal wrench
F87354: BS6, CE1, CE2, CE3, an autoclavable metal support, an universal wrench

CROWN EXTENSION Pack:
F87550: A CE II kit, a sterilization box,
a Piezotome® LED handpiece and its autoclavable cord, a dynamometric wrench
F87350: A CE kit, a sterilization box,
a Piezotome® handpiece and its autoclavable cord, a dynamometric wrench

Essential

OSTEOTOMY

BS1S (Slim)

9mm saw intended for the in-depth cutting of very dense cortical bones.

OSTEOPLASTY

BS4

Circular scalpel for osteoplasty and harvesting of bone particles or chips.

EXTRACTION

LC2

Tip, particularly slim, allows access to the tight spaces between the root and the alveolar bone.

LATERAL SINUS LIFT

SL1

Diamond-coated tip for vestibular bone window cut and for attenuation of sharp angles.

SL2

Diamond-coated ball tip for smoothing the vestibular bone window and precise osteoplasty.

SL3

Plateau tip served for sinus membrane elevation on the window's edges.

Essential Kit

The 6 fundamental ACTEON® tips for osteotomy, osteoplasty, extraction and lateral sinus lift.



ESSENTIAL Kit:
F87528: BS1S, BS4 II, LC2 II, SL1 II, SL2 II, SL3 II,
an autoclavable metal support, an universal wrench

ESSENTIAL Pack:
F87529: An Essential kit, a sterilization box,
a Piezotome® LED handpiece and its autoclavable cord,
a dynamometric wrench

RECOMMENDED SETTINGS

Extraction

TIPS	Maximum recommended mode	Fine setting*	IRRIGATION ml/mn
LC1	D1	1-3	60-80
LC2	D1	1-3	60-80
LC2L / LC2R	D1	1-3	60-80
NINJA®	D1	1-3	60-80

BoneSurgery

BS1 Slim / BS1 Long	D1	1-3	60
BS1RD	D1	1-3	60
BS2L / BS2R	D1	1-3	60
BS4	D1	1-3	60
BS5	D3	1-3	60
BS6	D1	1-3	60

CrestSplitting

	Mandibule	Maxillaire		
CS1	D2	D3	1-3	80-100
CS2	D2	D3	1-3	80-100
CS3	D2	D3	1-3	80-100
CS4	D2	D3	1-3	80-100
CS5	D2	D3	1-3	80-100
CS6	D2	D3	1-3	80-100

PiezoCision

PZ1	D1	1-3	60
PZ2L / PZ2R	D1	1-3	60
PZ3	D1	1-3	60

IntraLift

TIPS	Maximum recommended mode	Fine setting*	IRRIGATION ml/mn
TKW1	D2	3	100
TKW2	D2	3	100
TKW3	D2	3	100
TKW4	D2	3	100
TKW5 / TKW6	D3	1	30-40

SinusLift

SL1	D1	1-3	60
SL2	D1	1-3	60
SL3	D4	1-3	50
SL4	D4	1-3	30
SL5	D4	1-3	30

Crown Extension

BS6	D1	1-3	60
CE1	D1	1-3	60-80
CE2	D2	1-3	60-80
CE3	D1	1-3	60-80

Essential

BS1 Slim	D1	1-3	60
BS4	D1	1-3	60
LC2	D1	1-3	60-80
SL1	D1	1-3	60
SL2	D1	1-3	60
SL3	D4	1-3	50

* Not applicable to Piezotome® SOLO (LED)