

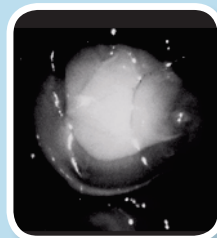
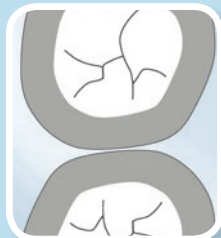
Diagnostic support for interproximal caries with the VistaCam iX family

Description

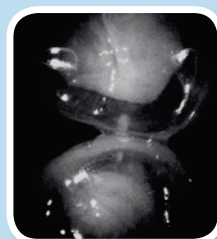
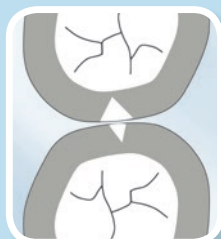
Caries pattern

VistaCam iX HD Proxi interchangeable head

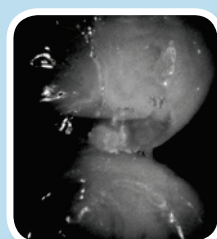
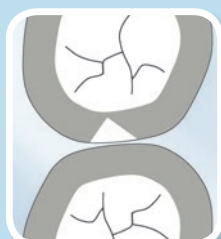
Healthy tooth enamel



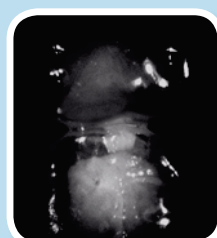
Early-stage enamel lesion



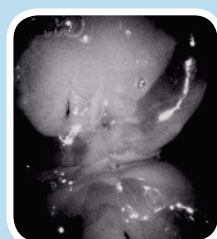
Enamel lesion, not yet penetrating the dentine



Large-scale enamel lesion, penetrating the dentine. Dentine caries to be suspected



Large-scale enamel lesion, penetrating the dentine. Dentine caries to be suspected



Safety for your patients:

The Proxi interchangeable head of the VistaCam iX HD and the VistaCam iX provide reliable support in the detection of interproximal caries. The benefit: diagnostic support without exposure to radiation.

Infrared light gives caries lesions a light, opaque appearance, while healthy tooth enamel appears translucent. The HD resolution of the VistaCam iX HD system provides an optimal display on the screen.

Therefore the Proxi interchangeable head allows for early and gentle detection of interproximal caries.