

Tyscor Pulse software – the devices at your fingertips

Central monitoring via the PC



COMPRESSED AIR
SUCTION
IMAGING
DENTAL CARE
HYGIENE

Keep your finger on the pulse of your surgery

Modern dental surgeries are used to working with digital systems. Peripheral devices are always at hand: from diagnostic imaging to hygiene documentation and invoicing, networked software solutions keep surgery staff constantly up to date.

But what about the status of the compressor and suction unit? The compressor is the heart of the surgery. Suction keeps the cycle in motion. Ensuring smooth operation of both systems is vital to daily operation of the surgery. This is why Dürr Dental has developed the Tyscor Pulse software.

Tyscor Pulse integrates the supply systems in the surgery network, providing a constant overview of the current status of monitored systems. The software sends automatic notification of scheduled maintenance such as filter changes or replacement of the amalgam collecting container. In the event of a fault, Tyscor Pulse shows whether you can remedy the problem yourself or offers the option of directly informing a Service Technician by e-mail, who can immediately look for a solution using a remote maintenance function.

The functions of the networked units are controlled on your PC via the intuitive and user-friendly devices manager of the Tyscor Pulse software. From the suction power and pre-programmable start times and delay times of the suction, to the required pressure range of the compressor and current performance data and status messages, you can keep your finger on the pulse of the surgery at all times.



This is what counts:

- Early service notifications
- Comfortable adjustment of the device settings
- Fast support in case of service issues

Compressed

Tandem compressors

- Display of pressure and humidity
- Automatic information about necessary filter replacement
- Adjustment option for the pressure range



Tandem compressors with electronic control for energy-saving operation.



Systems for

Amalgam separation

Amalgam separator CA 4

- Display of the fill levels
- If the vessel needs to be replaced, Tyscor Pulse will show this in good time
- Test operation can be carried out from the PC



All amalgam separators from Dürr Dental can be integrated in Tyscor Pulse.

air and suction

Power Tower Silence 200/42

- Display of pressure and humidity
- Adjustment options, e.g. the compressor pressure range and the delay time of the suction unit
- Display of the fill level of the amalgam separator

Power Tower Silence 200/42

The compressed air supply, suction and amalgam separation units are integrated in a single, space-saving housing and they are all monitored with Tyscor Pulse.

Tyscor V/VS 2

- User-friendly adjustment of the suction power (Eco, Balanced or Boost)
- Operating states of the suction unit are always within view
- Maintenance intervals can be scheduled via Tyscor Pulse



Tyscor V/VS 2

The latest generation of suction units. Extremely efficient, lightweight and network capable.

Tyscor Pulse



Steam sterilisation

Hygoclave 90

- Continuous progress monitoring for your processes
- User-friendly protocol management
- Display and saving options for status messages

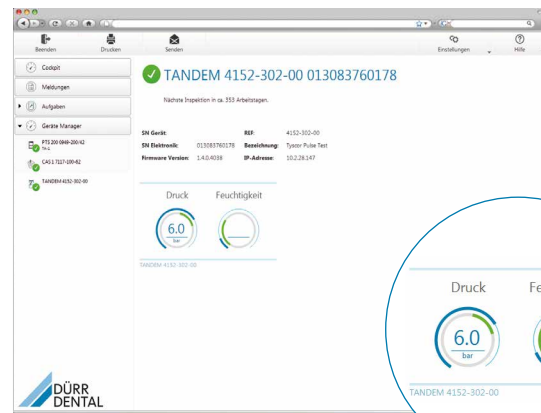
The progress of individual process steps is displayed graphically.

All information is just a heartbeat away

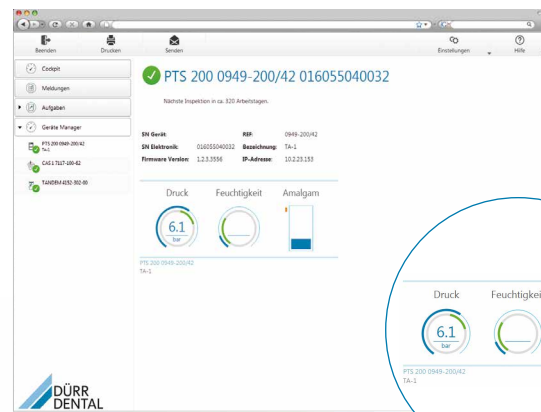
Tyscor Pulse software not only monitors your supply systems; it also makes your surgery safe for the future. This is because Dürr Dental offers innovative new functions for many devices that can be used with the aid of Tyscor Pulse.

Key functions at a glance:

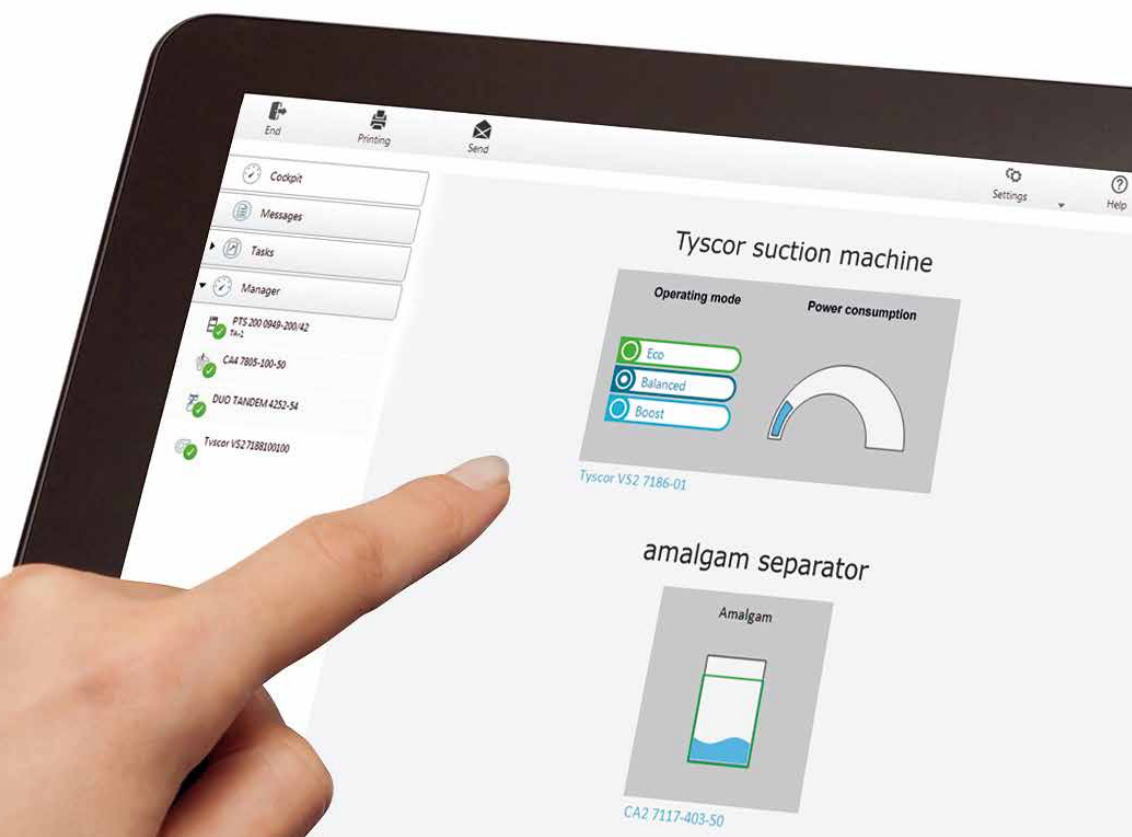
- Display of real-time device data, such as the pressure at the compressor or the amalgam fill level
- Automatic notification of maintenance intervals and messages
- Maintenance and error messages and all information relating to this are sent directly to the Service Technician by e-mail
- Logging of all messages in a message history for easy analysis during servicing
- Adjustment of device settings, e.g. delay time and switch on/cut off pressure via the software interface of Tyscor Pulse



Live status of the Duo Tandem compressor



Live status of the Power Tower Silence 200/42



System requirements at a glance

Tyscor Pulse	
Processor	Intel Pentium IV compatible CPU 1, 4 GHz or higher
Main memory (GB)	≥ 1 GB (2 GB recommended)
Resolution	1024 x 768, 16.7 million colours
Sound signal	Sound card, loudspeaker
Network	Network with DHCP Ethernet ≥ 100 Mbit
Operating systems	Windows 7 or higher, Mac 10.11.6