

Flexible integration into your existing software*.

New TWAIN interface for your KaVo DIAGNOcam™ Vision Full HD/ KaVo DIAGNOcam™ / KaVo ERGOcam One



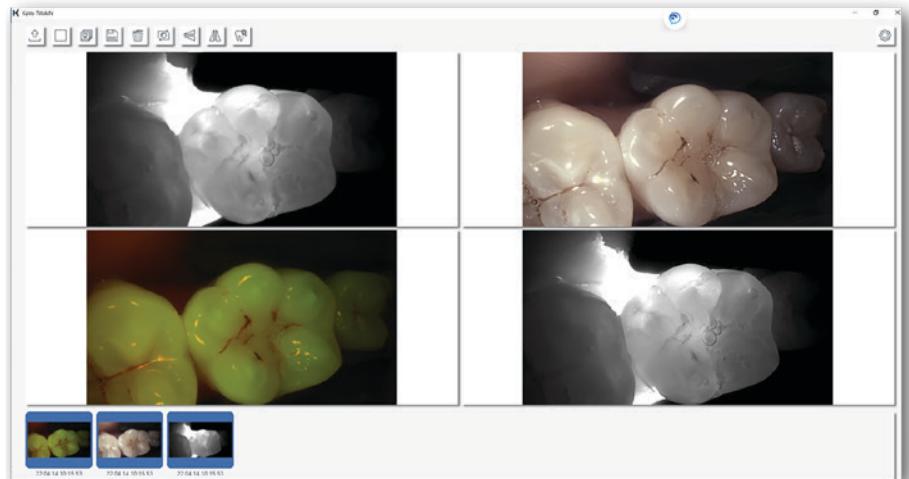
90098326_Rev0_en © Copyright KaVo Dental GmbH.

With the new TWAIN interface, images from your KaVo camera can be captured quickly and easily and transferred to your software*.

Full integration of all KaVo cameras

The DIAGNOcam, the DIAGNOcam Vision Full HD and the ERGOcam One can be used with all available functions via the new TWAIN interface.

Within the software, you have the option of choosing between a single shot or multiple shots and taking a 3-in-1 shot in less than one second in the available intraoral, transillumination and fluorescence modes.



Fast and easy image transfer

Following image capture, images can be viewed, compared, rotated, and flipped. The desired images can then be transferred to your software with one click for use there.

Order the TWAIN interface now and integrate KaVo units into your software*:

The TWAIN interface can be ordered from your dental specialist dealer using the material number 1.014.8400.

For installation, contact your dental specialist dealer or our KaVo e-Service at:
www.kavo.com/de-de/technischer-service

*The software must be TWAIN compatible to use the KaVo cameras.