

KaVo ESTETICA™ E70/E80 Vision

Get in touch with your vision.



Your wishes, our inspiration

In the beginning there was an idea. A vision. With your suggestions in our mind, we set about delivering what you asked for: simpler operation, seamless work processes, modern patient communication, access to patient data and automated hygiene. You asked us to retain what was tried and tested, such as the ergonomic suspended chair design. Your vision has now come to life. A design that simplifies everyday work. The KaVo ESTETICA E70/E80 Vision.

Highlights at a glance:

The dentist element. Touchingly simple.

1. Intuitive operating concept for quick and direct access to all important functions for time-saving and smooth treatment processes

Patient communication. Ready to get started.

2. KaVo DIAGNOcam Vision Full HD* - light years ahead of tooth decay
3. High-resolution screens: KaVo Screen HD in 22" and KaVo Screen One in 19"

CONEXIO.

Less searching. More finding.

4. KaVo CONNECTbase helps simplify patient communication – making it available on your KaVo treatment unit and without any additional software installation. Just plug in the camera and get started. The images are displayed directly on the treatment unit's screen and can be compared with past saved images.

Hygiene. Automated. Integrated.

5. Hygiene centre with integrated, removable adapters for instrument and suction hoses for time-saving, automatic cleaning and disinfection

RELAXline soft upholstery*

6. Comfortable memory foam with soft, leather-like surface material and a hand-crafted, stitched design to combine an exclusive look with a comfortable feel

Suspended chair. Tried and tested.

7. Easily adjustable armrests
8. Permitted patient weight up to 180 kg

Integrated endodontic and surgical functions

9. Endodontic functions with three different modes for file control and an expandable file database with almost 200 preset files
10. Newsurgicalfunctionwithspecialsmalland convenient light surgical motor and integrated saline solution pump

*Product not shown



Simple. Clear. Hygienic.

The innovative user interface of the dentist element with high-quality glass surface



Just trust your intuition.

Touchingly simple. With the sensitive touch display, you can control your KaVo ESTETICA E70/E80 Vision completely intuitively! Access all important functions and information effortlessly at any time with the touch display and its self-explanatory operation – before, during and after treatment. The design of the user interface has been specially developed for dental workflows. It is clearly arranged, logically structured and ensures you can find your way around with ease at all times.



reddot award 2015
winner interface design

The user interface was nominated for the "German Design Award" and has been awarded with the "Red Dot Award: Communication Design".

Working modes personalised for you

Your treatment unit should be as individual as you are. You should therefore customise the equipment of your KaVo ESTETICA E70/E80 Vision towards your personal requirements. Specialisations are no problem at all due to the flexible instrumentation. Equip your dentist and assistant element exactly as you and your team need. Many functions can be individually adapted to the practitioner, e.g. the name of the practitioner, the types of treatment or the direct key allocation on the start screen.

More freedom. More comfort.

Conveniently access all functions and parameters of integrated special devices that you need during the treatment via touch display or foot control. You will maintain a constant view of all information on the dentist element. Individual treatment procedures can be freely programmed at any time.



The KaVo ESTETICA E70/E80 Vision is also available in a cart version, and the ESTETICA E70 Vision also in a swing arm version.

Specialities not only for specialists



Endodontics taken to the extreme

Due to the integrated endo functions with three different modes for file control, you save money on an expensive endodontic device.

Thanks to the integrated file database with almost 200 preset files, you can configure, access and save all the important parameters such as transmission and torque values directly through the dentist element – and also create new files at any time.



The clever surgical option

Make work as comfortable as possible: equip your KaVo ESTETICA E70/E80 Vision with the KaVo INTRA LUX S600 LED. Combined with the KaVo surgical instruments and the saline pump integrated onto the dentist element, unlimited functions of a modern surgical device.



Surgical motor S600 LED – powerful but light

The KaVo surgical motor S600 LED is one of the smallest and lightest surgical motors – 28% lighter and 20% shorter than its predecessor model.

Surgery complete with integrated saline solution pump

With the saline solution pump, directly integrated into the dentist element and the saline solution holder, you will experience maximum convenience and the most effective relief during every surgical treatment.



Everything for a healthy posture

Enjoy the overall ergonomic concept of the KaVo ESTETICA E70/E80 Vision. Comfortable sitting, standing and reclining – everything is possible. There are no better prerequisites for a healthy posture and stress-free working for you and your assistants. Experience the freedom of natural, intuitive motion. And indulge your patients by providing comfortable reclining all the time.



*Highest position 900 mm,
lowest position 350 mm*



Give your legs more freedom.

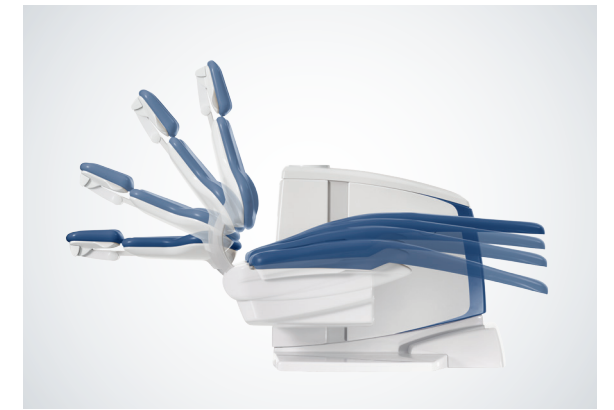
Enjoy the considerable legroom under the patient chair and position the foot control where you want it. The unique suspended chair concept of the KaVo ESTETICA E70/E80 Vision offers flexibility and comfort as you work. This means a healthy posture, better positioning to the patient and pleasant freedom of movement in every treatment situation.

Maintain your posture!

You can adjust the KaVo ESTETICA E70/E80 Vision to your personal needs and requirements. The adjustable height of the patient chair ranges from 350 mm to 900 mm. It guarantees optimal ergonomic conditions regardless of whether you sit or stand during treatment.

Treat your patients in the best position.

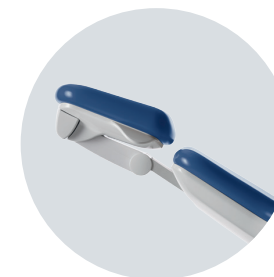
The patient positioning according to Trendelenburg is comfortable and ergonomic in every treatment position. Because the footrest of the patient chair is raised or lowered automatically to match the inclination of the backrest, the combined movement prevents the patient being squashed or stretched while the backrest is being adjusted. The elevated leg position also supports the circulation system.



*Comfort backrest:
maximum comfort and wide
shoulder rest for patients*

Perfect position for your patients

All patients are different, so it is essential to have a patient chair which takes this into consideration. Your patients will recline very comfortably with the wide Comfort backrest. Thanks to its height-adjustment system, the KaVo ESTETICA E70/E80 Vision adapts to every body height and constitution. The Progress backrest is especially narrow for optimum access to patients. This special head cushion allows your patients to recline comfortably even during long treatments – offering ergonomics at the highest level and comfort too.



*Progress backrest:
correct working posture and
optimum access for the dentist,
especially when treating children*



*The double-jointed headrest is
available in the pneumatic, motorised
and mechanical version.*

Comfort begins at the head.

Make yourself and your patients comfortable. Adjust the headrest of your KaVo ESTETICA E70/E80 Vision exactly to the position of the head and mouth. The inclination angle of the head is infinitely adjustable. The fixed positions are precisely adapted to the anatomy. Whether motorised, pneumatic or mechanical, you will always find the optimum position for the headrests – comfortably and precisely.

Get in touch with your vision – exclusively for the KaVo ESTETICA E80 Vision.

Optimal workflow down to the smallest detail. Experience a completely new level of working. Discover maximum treatment comfort for you and your patients. You will be delighted with the outstanding features available on the KaVo ESTETICA E80 Vision.



You and your patients can enjoy the comfort of the motorised seat-elevation system, exclusively offered by KaVo.

The best position for every patient

The motorised seat elevator means that patients with a hollow or round back and even children will be reclining comfortably and ergonomically. The seat elevator provides more reclining comfort, even during prolonged treatment, as you can reposition the patient as required.

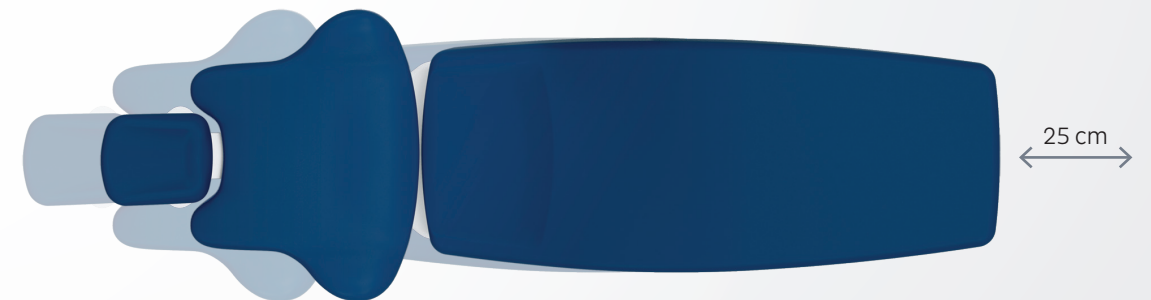
Future-proof – thanks to integrated USB interfaces

Connect additional selected devices very easily via the USB interfaces. This takes a matter of seconds, because your treatment system detects what you have connected by itself (series with E80 Vision, option for E70 Vision).



The spittoon bowl with automatic swing

The spittoon bowl pivots automatically towards the patient and back, as soon the original treatment position is resumed – this offers added convenience (series for E80 Vision, option for E70 Vision).



Use the horizontal movement as required, for example to provide space.

Everything exactly where it should be

Regardless of the height of your patient, the horizontal adjustment ensures that your working field – the mouth of the patient – will always stay in the same position. Your reaching distances will always be the same even if you move the patient chair while changing between upper jaw and lower jaw treatment.

There is comfort in every detail.

RELAXline: relaxation that you can see

With the new RELAXline soft upholstery, an exclusive design and comfortable feel are combined. A high-quality memory foam surrounded by a leatherette cover with a handcrafted, high-quality stitched design fits the contours of the patients perfectly, thus ensuring extraordinary levels of comfort. Available in elegant colours and with a handcrafted stitched design, RELAXline ensures relaxed patient positioning.

One control point for everything

All functions and integrated devices can be used via the operating logic of the foot control. This also minimises the risk of cross-contamination. With the pleasant right-left motion of the foot control, your leg muscles will remain absolutely relaxed even during prolonged treatment. A wireless foot control is also available as an option. This gives you even more flexibility when it comes to placement.



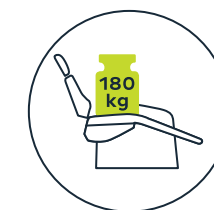
Easy to get into and out of the chair

The armrests of the KaVo ESTETICA E70/E80 Vision make it easier for your patients to get into and out of the chair. They easily swing downwards and provide support and security during treatment, without you having to forgo freedom of movement.



Relaxation due to calm movement

The slow motion function of your patient chair during treatment with the microscope means that it can be moved in slow motion. You will particularly appreciate this function when treating more sensitive patients.



Just right

The KaVo ESTETICA E70/E80 Vision guarantees the full functional range of the treatment unit even for heavier patients, up to 180 kg. Neither you nor your patients need to forgo comfort.

The future will be easy – for the whole team.

Inspire your team with the assistant element of your KaVo ESTETICA E70/E80 Vision. Intuitive and self-explanatory with a sleek and contemporary design. Equipped with a sensitive touch panel and the clear user interface. Similar to the dentist element. All central chair, hygiene and light functions are available quickly and directly.

Perfection for individual requirements

The assistant element is freely configurable and can be perfectly adapted to the actual requirements of your assistants. From the polymerisation handpiece to a supplementary saliva ejector.

A question of attitude

Instruments can be easily adjusted to individual preferences for smooth and fast movement patterns. The removable handpiece tray provides more hygiene and the flexible height adjustment and the extensive swivel range of the assistant element provides pure ergonomics.



Perfect workflow means more efficient working patterns.



Everything finds its place.

Enjoy a perfect workflow. The KaVo Centro mounting system on which all important devices can be arranged sensibly and ergonomically in one place becomes the centre of your treatment processes, reaching paths and movement patterns. You have everything to hand and in easy reach. You will also remain absolutely flexible if you wish to upgrade to further devices and future technologies. Devices and components are easily and quickly exchangeable due to the numerous adapters available.

Customisable for individualised working – the Centro mounting system



Dental microscope: sharp down to the finest detail

Experience a new dimension of vision with a dental microscope. Through a combination of Full HD image technology and modern LED lighting, sensationally clear, sharp and bright images can be generated to an exceptional depth of focus. The microscope images are shown on the KaVo screen and can be saved to the patient's file in CONEXIO conveniently with the touch of a button.

Intraoral X-rays always in range

Or simply install the appropriate small X-ray unit on the light support column with an adaptor and you can take X-ray images that are optimally adapted to the radiological indication straight from the treatment unit – high-precision, time-saving and right next to the patient.



KaVo **CONNECT**
base

The new foundation for your patient communication – integrated, simple and efficient.

KaVo CONNECTbase offers an innovative, easy patient communication workflow – you can use CONNECTbase to inform your patients about their dental situation directly on your KaVo ESTETICA E70/E80 Vision; there's no need to install any additional software. Just connect your camera and get started straight away. The images are displayed directly on the treatment unit's screen and can be compared with past saved images.



The plug-and-play principle – smooth processes made easy

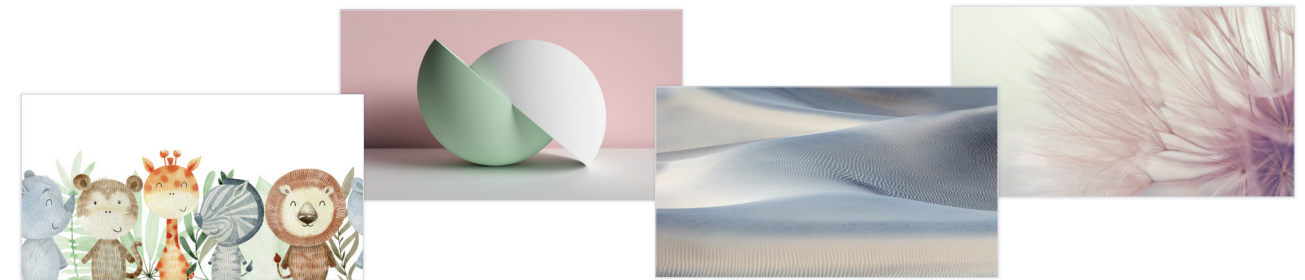
By using the cameras on the KaVo treatment unit, you have instant access to your camera images and can then export them via USB.

Operation via the touch display or the foot control of your treatment unit is just as easy, so there's no need to leave your workplace during the treatment, or to interrupt your process unnecessarily.

Interested in accessing other sources? No problem. By simply switching on the dentist element, various HDMI sources can be displayed on your treatment unit's screen.

Make your treatments a real experience

Make waiting times more comfortable and, where necessary, create a welcome distraction for your patients using visual entertainment right on your KaVo ESTETICA E70/E80 Vision unit. A great selection of media, including a customisable welcome screen or screen savers with a large selection of photos or slide shows will appeal to your patients, both young and old. Of course, you can also use your screen to promote your own topics of interest or simply share relevant information.



Various themes are available for your screen background to match the design of your practice.



KaVo **CONNECT**
link

The simple connection of your patient-management-software.

With the new software module CONNECTlink your patient-management-software can be connected with your KaVo treatment unit to enable a simple and fast transfer of patient data and clinical images. Thanks to this link, all relevant data can be directly accessed on the touch display of the dentist element. As usual, new clinical images can be added with the KaVo cameras and will be transferred automatically to the corresponding patient file in the patient-management-software thanks to CONNECTlink.

The new CONNECTlink software can be ordered as a separate module to your existing CONNECTbase patient management system. For the use of CONNECTlink, CONNECTbase and the corresponding CONNECTlink for your KaVo treatment unit are required.



CONEXIO connects what belongs together.

A unique KaVo operating philosophy makes it possible: CONEXIO paves the way for more efficiency in everyday practice. The KaVo software combines patient management software, 2D X-ray image archive and intraoral live images and offers fast, intuitive access. Access all patient data directly on the touch display of the KaVo ESTETICA E70/E80 Vision. So you'd like to add more data? No problem. Best of all:

They are assigned directly to the patient record.

Helpful for your diagnosis – Informative for your patient

Use the opportunity to select and compare images from different sources. All you need to show your patient is the dentist element of your KaVo ESTETICA E70/E80 Vision – without any keyboard, mouse, tablet or PC.



Perfect overview: The clinical monitoring status

Each image can be assigned to a tooth when the findings are recorded. You can set a clinical monitoring status from "healthy" to "critical". The comparison mode gives you the option of carrying out a progress check with older images of the tooth or images from other sources while the diagnosis is still in progress.

A sound treatment concept

With CONEXIO everything is exactly where you need it: Directly on your dentist element of the KaVo ESTETICA E70/E80 Vision. The user-friendly user interface via the touch display guarantees full access to the patient file. And in case you don't have a free hand: all central CONEXIO functions can also be controlled and activated using the foot control. Very convenient and hygienic.



Comparison of KaVo patient communication systems

	KaVo CONNECTbase	KaVo CONNECTlink	KaVo CONEXIO
Product description	Autonomous system – Integrated into your KaVo treatment unit	Software installation on the back-end PC Add-on to your CON- NECTbase*	Software installation on the back-end PC
Does software need to be installed on the PC?	No	Yes	Yes
Automatic integration of your practice management software	No	Yes	Yes
Availability of media (e.g. screen saver, KaVo themes, welcome screen)	Yes	Yes	No
Switching between sources directly on the dentist element of the treatment unit	Yes (2x HDMI)	Yes (PC content)	No
Images are displayed directly on the treatment unit screen	Yes	Yes	Yes
Image can be compared with previous images	Yes	Yes	Yes
Automatic image transfer	Yes	Yes	Yes
Operation	• Dentist element touch display • Treatment unit foot control	• Dentist element touch display • Treatment unit foot control • PC (mouse, keyboard)	• Dentist element touch display • Treatment unit foot control • PC (mouse, keyboard)
Compatible cameras	• KaVo ERGOcam One • KaVo DIAGNOcam Vision Full HD	• KaVo ERGOcam One • KaVo DIAGNOcam Vision Full HD	• KaVo ERGOcam One • KaVo DIAGNOcam Vision Full HD
Remote access + treatment unit updates	Yes (LAN)	Yes (LAN)	No

* Your CONNECTbase can be used as an autonomous system further on. If you would like to connect your CONNECTbase with your patient-management-software, the CONNECTlink software and the corresponding license for your KaVo treatment unit can be ordered.

DIAGNOcam Vision Full HD. Innovation in its most beautiful form.

Imagine a camera that provides you with three clinically-relevant images for your caries diagnosis – brilliantly sharp at all times and delivered in less than a second. Now it's possible: with the DIAGNOcam Vision Full HD.

Triple diagnostics with one click

Regardless of whether intraoral, transillumination or fluorescence images: The DIAGNOcam Vision Full HD has everything in one device.

Operation via customisable touch panels

The two touch panels on the top and bottom of the camera allow for easy images of the upper and lower jaw. In addition, the functions can be freely adapted to your personal way of working and to suit left or right-handed users.

Light as a feather and perfectly balanced

The low weight and the perfect balance of the camera enable ergonomic handling and fatigue-free work.

Combinable imagery modes

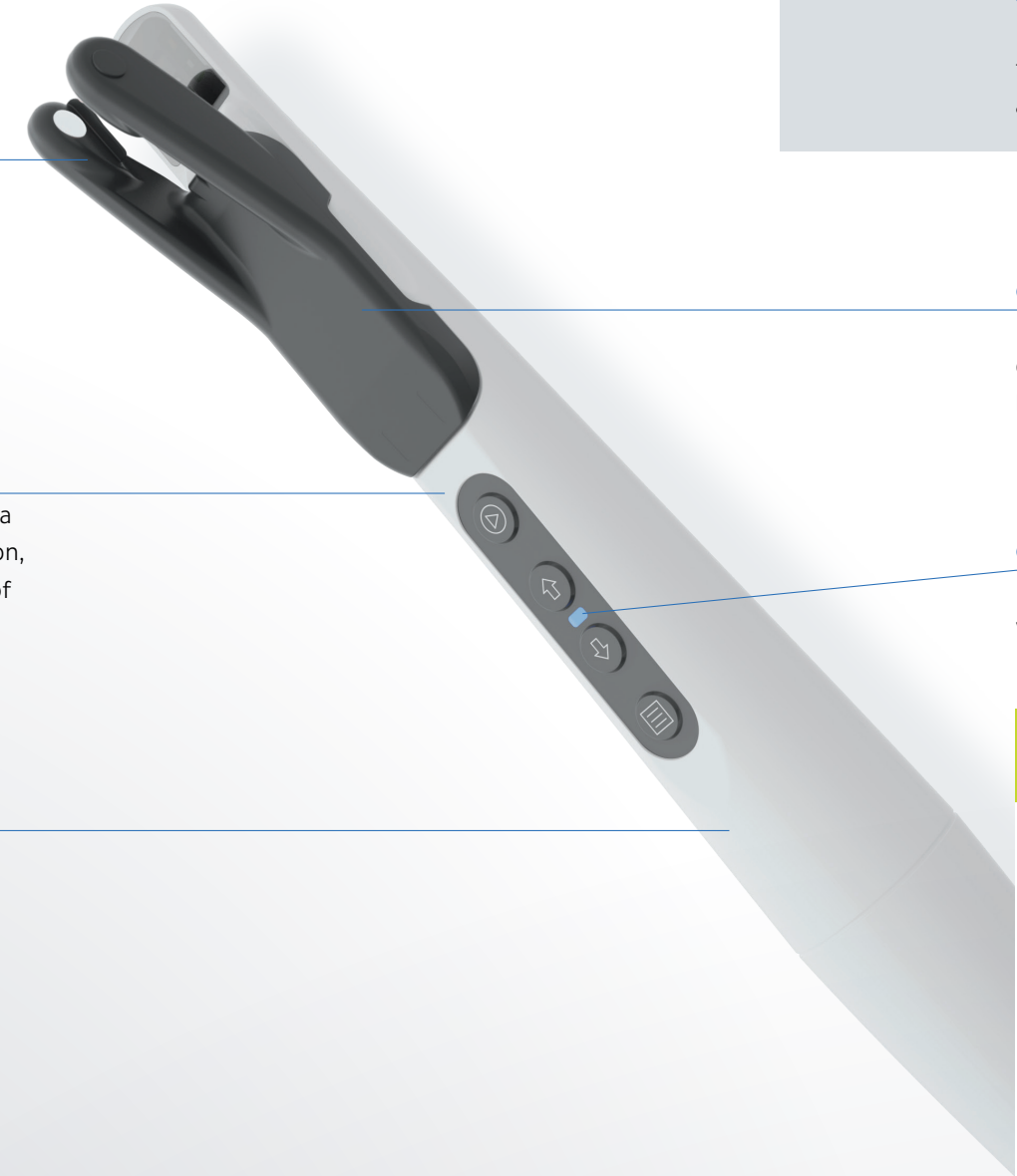
You choose whether you want to take an intraoral, transillumination or fluorescence images – or whether you want to combine two or three exposure modes.

All images in full HD

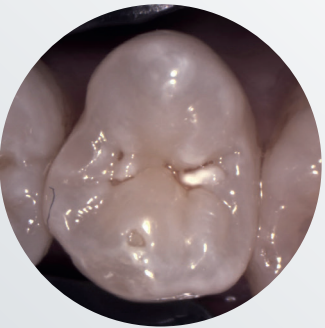
Thanks to the HD resolution of 1920 pixels by 1080 pixels, all images taken at any time will be displayed with brilliant sharpness.

Release when desired

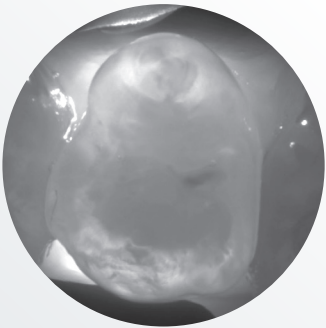
As an alternative to the touch panel or the mouse on the PC, the image can also be taken quite conveniently with the optional foot control.



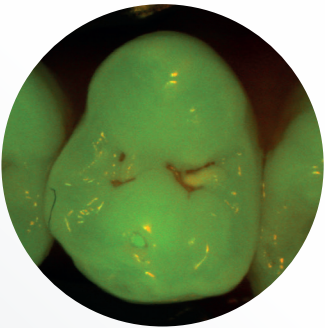
3 in 1



Intraoral images



Transillumination images



Fluorescence images

See more, show everything: Three-in-one diagnosis at the click of a button

Intraoral images for the first visual caries diagnosis, deep insights into the tooth structure through the transillumination technology and fluorescence images – all with just one single image in real time and in full HD resolution on your screen.

One tip for the entire workflow

You can also use the tip for transillumination images for all other exposure modes. Thanks to the tip's patented design, you'll no longer waste time switching attachments between shots.

Obviously simple operation

The integrated LED shows the camera's status: white for "in operation", blue for "standby", and red for "error".

Permanent autofocus



Jochen Kania
Dentist

"Many cameras offer an auto focus function. But it usually takes too long for the image to focus well enough for a clinically-relevant image. The permanent auto-focus function of the DIAGNOcam Vision Full HD is quite different: it is always on without having to press a button. It's automatically focused at all times – I get a sharp image immediately, without the wait.

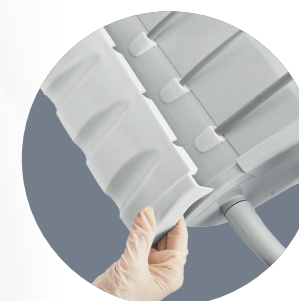
The result is a feast for the eyes: it's nearly impossible to take a picture that is not perfectly sharp – in full HD quality. And that applies regardless of whether the DIAGNOcam Vision Full HD is used as an intraoral camera, for transillumination images or in fluorescence mode – or whether all three modes are combined in one image."

When practical intelligence turns into reliable hygiene.

You'll love the simple, automated cleaning and disinfection procedure for the suction and instrument hoses. With the KaVo ESTETICA E70/E80 Vision, the Hygiene Centre is integrated into the body of the unit. Both suction hoses and instrument hoses can be connected. The Hygiene Centre is also detachable and thermodisinfectable. Minimal effort for optimal cleaning.

Practical, removable parts

Typically, KaVo has also given great thought to the areas that your hands touch. You can simply remove contaminated device parts such as handles, instrument trays or spittoon bowls. They can be cleaned, disinfected and some even sterilised, depending upon circumstances.



Improved protection with an anti-reflux system

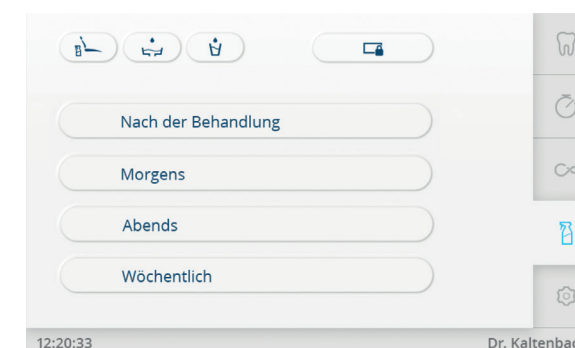
Protect your water supply system with the anti-reflux technology in KaVo instruments and motors. It prevents contaminated spray water from being aspirated into the treatment centre.

OXYmat and DEKAmat, both integrated into the device – introduce standardised and automated hygiene into your practice.



Automatic flushing programs

The automated, permanent and intensive germ reduction mechanism with OXYGENAL 6 prevents microorganisms from spreading during normal practice operations. The cooling and flushing liquids are especially designed for permanent and intensive germ reduction („weekly“ cleaning program) even after lengthy downtimes. The entire suction and drainage system and the suction hoses are hydromechanically cleaned and disinfected. In addition, the DEKASEPTOL Gel is dosed automatically to save time in your workflow.



Perfect light for the strictest demands

The KaVoLUX 540 LED can be operated via the intuitive dentist element. You can also switch it on and off via the automatic positions of your treatment unit. The award-winning KaVoLUX 540 LED offers perfect hygiene, the very best of KaVo quality, a long service life and maximum treatment comfort.



Best visibility for optimum working

A common problem: if the treatment light is not dimmed, composite often cures too quickly. Not so with the KaVoLUX 540 LED. The innovative COMPOsave™ mode (compatible with light-activated restoration materials) filters out all blue portions of the light, thus slowing down the curing of the filling material. Light-curing materials can therefore be worked on in a relaxed manner without having to dim the light. With a brightness of 15,000 lux, you always have the best visibility for the best possible treatment and exceptional results in series.



Optimum balance of power and output



With the PiezoLED ultrasonic handpiece, scaling becomes quicker and easier. Titanium sonotrodes with linear vibrations ensure highly effective treatment. Teeth and gums remain unaffected, even in thin areas, since circular light emissions enable optimum visibility for you, and you can work without fatigue due to the light, ergonomic design.

The KaVo SONICflex is a real all-rounder thanks to its diverse capabilities. With over 50 tips that can be switched with just one turn, it will soon become one of your most popular and versatile instruments. Use the KaVo SONICflex for prophylaxis, endodontics, periodontology, minimally invasive caries treatments, surgery or preparation.

Realise your aspiration.

When it comes to instrumentation, don't settle for anything less than the best. The KaVo MASTERmatic series covers all areas of application and provides you with the best visibility and optimum access for the best possible treatment. Specially combined with the extremely compact, light and smooth-running micromotor INTRA LUX KL 703 LED, you can work with great efficiency and free of fatigue in a total speed range of 100 to 40,000 rpm thanks to SMARTdrive.



Ergonomics and comfort in perfect harmony: the KaVo PHYSIO Evo

It is particularly important for dentists to adopt a healthy and comfortable posture in every treatment situation. Nothing influences your posture quite as much as the work chair on which you sit every day. That is why the KaVo PHYSIO Evo and Evo F are tailored precisely to the requirements and work processes of dentists and their assistants.

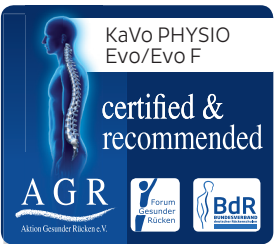


Ergonomics hidden in the detail

Thanks to separate adjustment functions, the seat surface and backrest can be adjusted individually to your anatomical requirements and your personal treatment style. The back and seat cushions of the KaVo PHYSIO Evo are ergonomically formed. The centred elevation in the seat cushion offers a stable seat and prevents slipping, even in the event of quick, short rolling movements. The rounded-off femoral rest offers great freedom of movement. Thanks to the spring-force supported backrest, the back muscles – in particular the lumbar spine – are permanently, actively supported and thus sustainably looked after. Seamless work processes and the best possible seating comfort thus become a matter of course with each treatment.

An exceptional concept

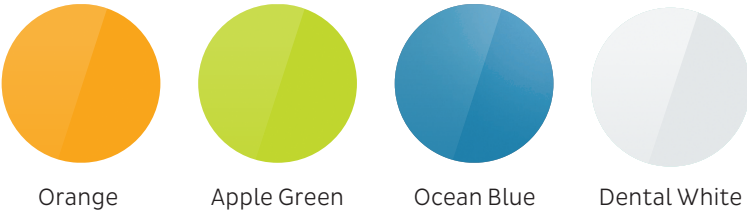
The KaVo PHYSIO Evo treatment chair has been awarded with a seal of quality from Germany's „Campaign for Healthier Backs“ association (AGR). An independent, multidisciplinary expert commission bases this award on stringent assessment criteria for ergonomics and health.



Paint colours metallic

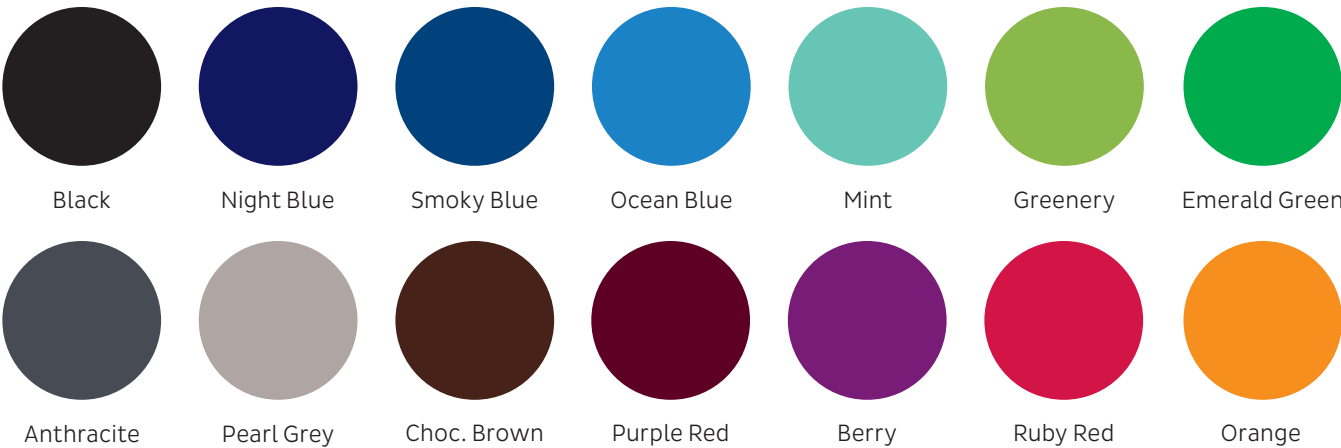


Paint colours plain



Colours shown may not be exact due to reproduction limitations. (Please order the KaVo colour chart!)

Upholstery colours



RELAXline soft upholstery



Agave/Blue Line Edition*



Greenery Edition



* Blue Line Edition not in combination with RELAXline soft upholstery

Equipment options

	E80 Vision		E70 Vision				E80 Vision		E70 Vision		
	T	C	T	S	C		T	C	T	S	C
Patient chair											
Soft upholstery	●	●	●	●	●		●	●	●	●	●
RELAXline soft upholstery	○	○	○	○	○		●	●	●	●	●
Mot. horizontal tracking	●	●	-	-	-		●	●	●	●	●
Mot. seat elevation	●	●	-	-	-		○	○	○	○	○
Backrest											
Comfort	x	x	x	x	x		○	○	○	○	○
Progress	x	x	x	x	x		●	●	●	●	●
Headrest											
Double-jointed, mechanical	-	-	●	●	●		○	○	○	○	○
Double-jointed, pneumatic	●	●	○	○	○		○	○	○	○	○
SOMATIC, E-motorised	○	○	○	○	○		○	○	○	○	○
Comfort cushion	○	○	○	○	○		○	○	○	○	○
Armrest											
Left	○	○	○	○	○		○	○	○	○	○
Left and right	○	○	○	○	○		○	○	○	○	○
Dentist element											
Touch display	●	●	●	●	●		○	○	○	○	○
Turbine hose	○	○	○	○	○		○	○	○	○	○
LUX motor KL 703 LED™	○	○	○	○	○		○	○	○	○	○
Endo function	○	○	○	○	○		○	○	○	○	○
COMFORTbase	○	○	○	○	○		○	○	○	○	○
Triple function handpiece	-	-	●	●	●		○	○	○	○	○
Multi function handpiece	●	●	○	○	○		○	○	○	○	○
PiezoLED™ ultrasonic scaler	○	○	○	○	○		○	○	○	○	○
SONICflex™ sonic scaler	○	○	○	○	○		○	○	○	○	○
Physiological saline solution	○	○	○	○	○		○	○	○	○	○
Surgical motor S600 LED	○	○	○	○	○		○	○	○	○	○
Spray heating for instruments	●	●	●	●	●		○	○	○	○	○
Anti-reflux valve for instruments	●	●	●	●	●		○	○	○	○	○
Removable handpiece tray	●	●	●	●	●		○	○	○	○	○
X-ray image viewer	○	○	○	○	○		○	○	○	○	○
USB interface	●	●	○	○	○		○	○	○	○	○
Pneumatic brake for arm system	○	○	○	○	○		○	○	○	○	○
Tray holder for 2 standard trays	●	●	●	●	●		○	○	○	○	○
Adjustable service table for two standard trays	●	-	●	-	-		○	○	○	○	○
Service table 1658	-	●	-	-	●		○	○	○	○	○
Assistant element											
Glass touch panel	●	●	●	●	●		○	○	○	○	○
Spray mist suction	●	●	●	●	●		○	○	○	○	○
Saliva extraction	●	●	●	●	●		○	○	○	○	○
2nd saliva ejector	○	○	○	○	○		○	○	○	○	○
Triple function handpiece	○	○	○	○	○		○	○	○	○	○
Polymerisation handpiece Satelec Mini LED	○	○	○	○	○		○	○	○	○	○
Support for tray holder	○	○	○	○	○		○	○	○	○	○
Height-adjustable arm	●	●	●	●	●		○	○	○	○	○
Removable handpiece tray	●	●	●	●	●		○	○	○	○	○
Unit body											
Glass spittoon bowl	x	x	x	x	x		○	○	○	○	○
Porcelain spittoon bowl	x	x	x	x	x		○	○	○	○	○
Motorised swivelling spittoon bowl	●	●	○	○	○		○	○	○	○	○
Hygiene centre	●	●	●	●	●		○	○	○	○	○
Permanent germ reduction	●	●	●	●	●		○	○	○	○	○
Intensive germ reduction	●	●	●	●	●		○	○	○	○	○
Hydroclean (rinsing system)	●	●	●	●	●		○	○	○	○	○
DEKAmat™ and OXYmat	●	●	●	●	●		○	○	○	○	○
Warm water boiler	●	●	●	●	●		○	○	○	○	○
VACUstopp	●	●	●	●	●		○	○	○	○	○
Wireless foot control	○	○	○	○	○		○	○	○	○	○
Supply system											
Water block DVGW	●	●	●	●	●		○	○	○	○	○
Additional device connections	○	○	○	○	○		○	○	○	○	○
AQUAmat	●	●	●	●	●		○	○	○	○	○
CENTRAmat	○	○	○	○	○		○	○	○	○	○
Disposal system											
External suction	●	●	●	●	●		○	○	○	○	○
DÜRR amalgam separator	○	○	○	○	○		○	○	○	○	○
DÜRR automatic separation unit	○	○	○	○	○		○	○	○	○	○
Operating light											
KaVoLUX™ 540 LED	○	○	○	○	○		○	○	○	○	○
Light attachment bar	○	○	○	○	○		○	○	○	○	○
Adapter for light attachment bar (e.g. for KaVo FOCUS™)	○	○	○	○	○		○	○	○	○	○
Patient communication											
KaVo Screen One	○	○	○	○	○		○	○	○	○	○
KaVo Screen HD	○	○	○	○	○		○	○	○	○	○
CONEXIO™	○	○	○	○	○		○	○	○	○	○
KaVo ERGOcam™ One intraoral camera	○	○	○	○	○		○	○	○	○	○
KaVo DIAGNOcam Vision Full HD™	○	○	○	○	○		○	○	○	○	○

● Standard equipment ○ Optional equipment x Must be selected - Not available

90095933_en_REV1 We reserve the right to make technical modifications. Slight colour differences are due to the printing process. © Copyright KaVo Dental GmbH.