

2023

GLOBAL DENTAL CATALOG **PROVEN PRODUCTS**



Dr. Banner & Team Take Dentistry Mobile with the GO Ultra Portable System

See page 30



**THIS YEAR'S LINEUP of
Dental Motors & Handpieces**

See pages 4-11

**Mobile Dental
Cart Solutions**

See pages 36-37





Welcome to the 2023 Aseptico Global Dental Catalog

Glenn Kazen, President

Welcome to the Aseptico 2023 Global Dental Catalog! Each year we improve our products to help clinicians perform dentistry more effectively — whether placing implants in a high-tech practice or delivering care in non-traditional dental settings such as nursing homes and remote environments.

We are pleased to report that the GO Ultra Portable Dental System has been proven in a variety of settings — including urban, rural, and humanitarian clinics. Feedback from users has been terrific — especially with regard to how quiet the unit is and how easy it is to use and clean. Read more and link to our new video about the GO Ultra Portable dental system on pages 30-31.

The products of which we are most proud, Aseptico® dental motors, have earned numerous industry accolades and a worldwide reputation for legendary performance and reliability. In these pages you will find our complete line, including the award-winning all-in-one 7000 Series which has been named both a *Top 25 Endodontic Product* and a *Top 25 Dental Implant Product* by *Dentistry Today* magazine for eight consecutive years.

We take pride that almost all Aseptico products are made in the USA and invite you to compare Aseptico products to any other for quality, performance, innovative features, reliability and value.



Trusted Worldwide

Call 425.408.9347 or Shop Online at www.aseptico.com

2023

Aseptico

GLOBAL DENTAL CATALOG **PROVEN PRODUCTS**



Dental Motors & Handpieces

WE POWER DENTISTRY

Oral Surgery and Implant Motors	4-6
Electrical Operative Motor	7
Endodontic Motors	4-6 & 8-9
Lab Motors	11
Handpieces	10-18
Accessories and Replacement Parts	20-21

Innovations & Utility

PROVEN PRODUCTS

Dental Delivery Systems	24-25
Powered Trolley Carts	26
Ortho Technique Chain & Grid	27
HandiDam® Pre-Framed Dental Dam	27
Dental Dam Clamps	27
Dental Dam Punches and Forceps	27

Mobile & Portable Dentistry

MOVING TO MEET NEED

Portable Delivery Systems	28-37
GO Ultra Portable Delivery System	30-31
Mobile Dental Carts	36-37
Portable Chairs & Stools	38-39
Portable LED Exam Light	40
Portable Tray Stand	41
Portable Sterilizer/Autoclave	41
Portable Saliva Ejector	41

Customer Service & Ordering

VALUE & EXCELLENCE

Ordering Information, Policies and Contact Information	42
Repair and Product Support	42

Call 425.408.9347 or Shop Online at www.aseptico.com

Aseptico[®]

Trusted Worldwide



DENTAL MOTORS & HANDPIECES

Made To Rigorous Quality
Standards For Dentists
All Over The World



7000 Series Motor All-in-One Surgical Platform

Oral Surgery, Implant Placement,
Endodontics & Restorative Dentistry

AEU-7000



Mont Blanc AHP-85MBFO-CX

See details and other compatible handpieces pages 12-18.

The Aseptico 7000 Series Dental Motor

is one of the most powerful and easy-to-use implant/surgical motors available today. This all-in-one platform provides specialist-level performance for restorative, oral surgery, implant, and rotary endo applications.

All-in-One Platform

The 7000 Series has the ability to place implants up to 80 Ncm with a Mont Blanc® 20:1 handpiece. For oral surgery, predictable and adjustable torque adds to practice efficiency. For endodontics, the 7000 Series features auto-stop-reverse functionality to prevent file separation and comes preloaded with the complete Dentsply Sirona rotary file library plus the ability to customize your own presets. For restorative procedures, the 7000 Series streamlines workflow; simply change out the handpiece and you have a restorative powerhouse.



Todd E. Shatkin,
DDS, FADI, FICD,
FICOI, DIAMDI
Cosmetic and
Implant Specialist
Amherst, NY

"I've used numerous motors in the past for my implants and oral surgery. It seems that they were always breaking down! The AEU-7000 has been the finest implant motor I've used in my 25 years of practice! It's amazing that it is such a workhorse. I've placed over 40,000 implants and have had practically no issues!"

Dynamometer Handpiece Calibration

The 7000 Series dynamometer calibration system gives dentists the ability to quickly and easily diagnose the health of a handpiece and verify that the handpiece is producing the correct torque for the application.

Upgradeable Software

Upgradeable software means a fantastic return on investment while ensuring that your future needs are also met.

Autoclavable Tubing

Reusable, autoclavable irrigation tubing means less waste, no more buying or keeping track of costly disposables.

Multi-Function Foot Control

The Multi-Function Foot Control replaces the need to adjust the unit manually during the procedure providing the operator variable speed control, forward-reverse, irrigation flow rate, torque adjustment, and memory functions.

Available handpiece ratios

1:1, 1:2, 1:3, 1:5, 8:1, 20:1

PACKAGE DISCOUNTS AVAILABLE.
CALL TODAY! 425.408.9347

AEU-7000

- Recommended for oral surgery, dental implants, rotary endodontics & restorative dentistry
- All-in-one platform streamlines workflow
- Compatible with E-type 8:1 endo, 20:1 implant, 1:1, 1:2 surgical, 1:5, 1:3 high speed handpieces with external irrigation connections
- Additional handpiece ratios available via dynamometer calibration 4:1, 16:1, 32:1
- Advanced features and efficient adjustable torque desired by specialists
- Dynamometer provides exceptional handpiece testing and calibration
- Autoclavable 40k rpm brushless micromotor
- Works for all implant types
- Endodontic presets and complete Dentsply Sirona rotary endodontic file library onboard
- Upgradeable software
- Adjustable irrigation flow rate of up to 140 ml/min.
- Reusable, autoclavable irrigation tubing
- Easy cleaning and maintenance
- Optional: fiber-optic illumination, multifunction foot control, carrying case
- Console dimensions 9.98" W x 9.42" L x 5.1" H (25 x 24 x 13 cm)
- Universal voltage 100-240V

7000 Motor with On/Off Foot Control	AEU-7000E
Motor with Multi-Function Foot Control	AEU-7000E-70V
7000 Motor with LED Illumination and Multi-Function Foot Control	AEU-7000L-70V

Options

Carrying Case	410205-HNDL
Micromotor with 10ft cable	AE-230M-40EXT
On/Off Foot Control	AE-7PM
On/Off Foot Control with 10ft cable	AE-7PM-10
Multi-Function Foot Control with 10ft cable	AE-70V2-10

Replacement Parts

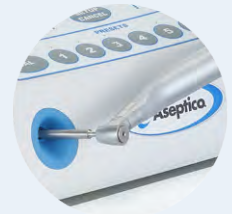
Fiber Optic Micromotor	AE-230L-40
Micromotor with 6ft cable	AE-230M-40
Multi-Function Foot Control	AE-70V2
Calibration Bur	461558
Irrigation Bag Hanger Rod	461541
Power Cord	840079
Handpiece Cradle	461561-01

Tubing and Accessories *see page 20-21*

7000 Series Top Features

Advanced Dynamometer Handpiece Calibration

The advanced dynamometer calibration system on 7000 Series motors gives dentists the ability to quickly and easily diagnose the health of a handpiece and verify that it is producing the correct torque for the application.



Multi-Function Foot Control

The Multi-Function Foot Control replaces the need to adjust the unit manually during the procedure providing the operator variable speed control, forward-reverse, irrigation flow rate, torque adjustment, and memory functions.



File library, User-Defined Settings

Aseptico® 7000 Series motors come pre-loaded with the complete Dentsply Sirona rotary endodontic file library and allows the user to store up to six different implant and six different endodontic presets to streamline workflow.



Software Upgrades

Upgradeable software ensures you are always operating at the state-of-the-art without having to reinvest in equipment.



*Awarded Top 25 Implant Motor
 8 Consecutive Years!*



aseptico.com/aseptico-blog/
 Read Full Story Here.



FRIENDLY AND PROFESSIONAL CUSTOMER SERVICE. **CALL TODAY! 425.408.9347**



6000 Series Motor All-In-One Platform Our Best Value!

Osteotomy & Implant Placement,
Rotary Endo & Restorative Dentistry

AEU-6000

- Recommended for implantology and rotary endodontics
- All-in-one platform streamlines workflow
- Compatible with E-type 8:1 endo, 20:1 implant, 1:1, 1:2 surgical, 1:5, 1:3 high speed handpieces with external irrigation connections
- Integrated Handpiece Calibration
- Autoclavable 40k rpm brushless micromotor
- Works for all implant types
- Endodontic presets and complete Dentsply Sirona rotary endodontic file library onboard
- Upgradeable software
- Adjustable irrigation flow rate of up to 140 ml/min.
- Reusable, autoclavable irrigation tubing.
- Easy cleaning and maintenance
- Optional Multi-Function Foot Control
- Small footprint: 8.6 W x 9.2" L x 4.8" H (22 x 23 x 12 cm)
- Universal voltage: 100-240V

The AEU-6000 is our best-selling all-in-one motor because of its reliability and affordability. This versatile machine has the ability to place implants up to 50 Ncm with a Mont Blanc 20:1 handpiece. It performs rotary endo with auto-stop-reverse, and it can also be used as a backup for your restorative and oral surgery systems. No other motor on the market can give you these benefits at such an affordable price!

With upgradeable software, the AEU-6000 unit will be a workhorse for many years to come. Autoclavable irrigation tubing means you don't have to buy a new set for each procedure. Five preset buttons can be programmed separately for both implants and endodontics, reducing your procedure time dramatically.



The 6000 Series all-in-one platform allows the clinician to place implants, perform minor oral surgery, rotary endodontics, and restorative dentistry. Aseptico offers the ideal handpieces for each clinical application. See 12-18.

Versatile All-in-One Platform The versatile 6000 Series all-in-one platform gives dentists the capability to perform implant placement, rotary endodontics, oral surgery, and restorative procedures.

Integrated Handpiece Calibration The 6000 Series features an integrated program for calibrating the handpiece for the procedure to be performed.

Auto-Stop-Reverse & Torque Settings Precise torque adjustment allows the user to select torque limits in Newton centimeter increments or gram centimeter increments, depending upon handpiece ratio selected. Four torque modes allow the user to select from auto-stop-reverse for endodontic procedures, auto-stop, maximum torque, or torque limiting modes.

Available handpiece ratios

1:1, 1:2, 1:3, 1:5, 8:1, 20:1



FRIENDLY AND PROFESSIONAL CUSTOMER SERVICE. CALL TODAY! 425.408.9347



Heath Snell, DDS
General Dentist
Providing Oral
Surgery Services
Gilbert, AZ

"I have really enjoyed my Aseptico AEU-6000. It meets all my surgery needs from placing implants to removing full bony impacted wisdom teeth. I have found that this unit has more features and better torque than my old W&H."

PACKAGE DISCOUNTS AVAILABLE.
CALL TODAY! 425.408.9347



Implant Motor w/ Multi-Function Foot Control **AEU-6000-70V**

Implant Motor w/ On-Off Foot Switch **AEU-6000**

Options

Carrying Case	410205-HNDL
Micromotor with 10ft cable	AE-230M-40EXT
On/Off Foot Control	AE-7PM
On/Off Foot Control with 10ft cable	AE-7PM-10
Mult-Function Foot Control with 10ft cable	AE-70V2-10

Replacement Parts

Micromotor with 6ft cable	AE-230M-40
Multi-Function Foot Control	AE-70V2
Irrigation Bag Hanger Rod	461541
Power Cord	840079
Handpiece Cradle	461561-01

Tubing and Accessories see page 20-21

Versatility, Dependability and Value for Dentistry

aseptico.com/aseptico-blog/
Read Full Story Here.



6000 Series Top Features

Integrated Handpiece Calibration

Because the mechanical condition of a handpiece can affect efficiency, the 6000 Series features an integrated program that will run the selected handpiece through a series of calibration tests after the bur, file, or drill has been inserted into the handpiece.



File library, User-Defined Settings

Aseptico® 6000 Series motors come pre-loaded with the complete Dentsply Sirona rotary endodontic file library and allows the user to store up to five different implant and five different endodontic presets to streamline workflow. The system automatically switches between the implant and endodontic presets, depending upon which handpiece ratios are selected.



Autoclavable Tubing

The 6000 Series utilizes reusable, autoclavable irrigation tubing which means less waste, and no costly single-use disposables. See full details on page 21.



Software Upgrades

Upgradeable software ensures you are always operating at the state-of-the-art without having to reinvest in equipment.



Endo DTC® Rotary Motor America's Most Popular

AEU-25

- Most sold, most trusted, endo motor in America
- Dentsply Sirona file library included
- Auto-stop-reverse functionality

*Foot control
included*



The Endo DTC Rotary Endo Motor is America's most popular endo motor because it is a proven reliable performer. Many dentists did their endodontic training on this system and they still prefer it today. And why not? There is so much packed into this small footprint at such an affordable price: advanced digital torque control technology with auto-stop-reverse helps prevent file separation, five programmable memory buttons, onboard file library, integrated calibration system, autoclavable 30k rpm brushless micromotor, and upgradeable software. Pair with a MicroNiTi series handpiece to make the perfect rotary endo system.

Available handpiece ratios
1:5, 1:1, 4:1, 8:1, 16:1, 64:1

Endo DTC®

AEU-25

Replacement Parts

Micromotor	AE-4B-30
On/Off Foot Control	AE-7P
Handpiece Holder	AE-SFG

Recommended handpieces *see page 15*

Chad Burgess, DDS
Endodontist
Rifle, CO

"As a busy endodontist, I want equipment that is reliable, but more importantly, from a company that has great customer service. Aseptico delivers on both fronts. Fortunately, their handpieces are workhorses, so I don't have to contact them very often!"



MicroNiTi Handpieces

We recommend the MicroNiTi series of endodontic handpieces. Select from Minihead or Microhead. *See page 15.*

www.aseptico.com



Electronic Endodontic System Our Most Advanced Endo Motor

AEU-27A

- Lightweight motor and cable
- Upgradeable software
- Weighted omnidirectional foot pedal
- Includes all features of America's most popular endo motor, The Endo DTC®



The Electronic Endodontic System features digital torque control with auto-stop-reverse to prevent file separation and automatic calibration to test both the motor and handpiece for accurate performance and consistent operation. Easy to operate, with an auto-clavable brushless motor, this motor also features onboard file library, five programmable memory locations, and preset options that allow single file, file series, or custom file series. Upgradeable software assures return on investment. Includes weighted omnidirectional foot pedal.

Available handpiece ratios

1:5, 1:1, 8:1, 16:1

Electronic Endodontic System

AEU-27A

Replacement Parts

Micromotor	AE-250-30
On/Off Foot Switch	AE-7PM

MicroNiTi series endodontic handpieces recommended *see page 15*

Richard Mounce DDS

Mounce Endo

Eagle River, AK

"The AEU-27A is the most versatile, safe and economical motor available anywhere in the world, at any price. That's why I customized the AEU-27A with rpm and torque presets for the MounceFiles in both Controlled Memory and Standard Nickel Titanium. Upgradeable, simple to use, and ergonomic, it sets the standard for electric endodontic motors for many years to come."



Don't forget the HandiDam®

Created by Aseptico, it's the original pre-framed rubber dam trusted worldwide. Easier and more efficient — it's the only rubber dam that allows access to suction or take x-rays while isolation and clamps remain in place. See page 33.



FRIENDLY AND PROFESSIONAL CUSTOMER SERVICE. CALL TODAY! 425.408.9347

Electrical Operative Motor Top-Rated Motor Converts Air to Electric

AEU-5000

- Powerful, high torque electric motor
- Attach to your air-driven high speed connection and use your rheostat
- Electrical option for efficient and quiet restorative procedures
- Up to 200,000 rpm with high speed handpiece
- Intuitive design and operation
- Includes endo mode with auto-stop-reverse torque setting



Recommended handpiece
1:5 Restorative with
fiber-optic illumination
AHP-72MK-FO

The versatile and cost-effective operative motor

is designed to convert a standard air dental delivery system into a powerful electric handpiece system for numerous dental applications.

The AEU-5000 features endo functionality, fiber optic intensity adjustment, a compact and easy-to-clean console, a large backlit display, intuitive user interface, and a 40,000 rpm brushless autoclavable micromotor. Innovative LED technology produces the brightest illumination you'll find in a dental handpiece.

Available handpiece ratios

1:5, 1:2, 1:1, 5:1, 8:1

Electrical Operative Motor	AEU-5000
Adjustable Mounting Bracket	330569
Replacement Micromotor	AE-240-40

Recommended Handpieces see pages 14- 18



Asepticco

2-Year Warranty on Asepticco® Dental Motors Made in the USA

Our Commitment to Dental Professionals

Asepticco is committed to excellence in everything we do and every product we make. We pioneered important innovations in endodontic and implant motors and continue to drive advancements with important clinical benefits. Asepticco® brand motors are fully compliant to US and international manufacturing and safety standards including current FDA Good Manufacturing Practices, and are certified to US and CDA standards for electrical, mechanical, and fire safety. That is why Asepticco proudly offers a 2-year warranty on all Asepticco® 7000 Series, 6000 Series, 5000 Series, and Asepticco® rotary endodontic motors. With world-class customer support, and speedy and professional repairs, buying an Asepticco®, American-made, high-quality motor, provides more value than ever!

CALL TODAY!
425.408.9347
Or shop online at
asepticco.com

Heavy Duty Brushless Lab Motor Torque Pro Delivers Power

AEU-16SS-120

- For heavy acrylic use
- Brushless 50k rpm micromotor
- Consistent torque even at low speeds
- Includes Variable Speed Foot Control



The Heavy Duty Brushless Lab Motor

delivers power, performance, durability, and portability. The brushless 50k rpm micromotor can produce up to 8.3 Ncm of torque and features easy to read digital display, preset memory storage, and hand/foot change button.



Heavy Duty Dental Lab Motor **AEU-16SS-120**

Replacement Parts:

Motor/Cable Assy	AE-H180
------------------	----------------

Variable Speed Footswitch	AE-SP
---------------------------	--------------

Light Duty Lab Motor Powerful & Lightweight

AEU-10SS

- For light to medium acrylic use and low speed prophylaxis
- Versatile E-type straight 1:1 handpiece included
- 20k rpm micromotor
- Available in 110V or 220V
- Includes AE-7P On/Off Foot Switch



Includes AHP-101 Handpiece

The **Light Duty Lab Motor** is one of the finest motor and handpiece combinations available to the professional. It is ideal for chairside adjustments, prophylaxis, or any light to medium use.

Light Duty Dental Lab Motor **AEU-10SS**

Light Duty Dental Lab Motor **AEU-10SS-220**

Options

Optional Variable Speed Foot Control	AE-14A
--------------------------------------	---------------

Replacement Parts:

1:1 Handpiece	AHP-101
---------------	----------------

Micromotor	AM-103B
------------	----------------

On/Off Foot Switch	AE-7P
--------------------	--------------

Battery Powered Portable Lab Motor Ideal for Mobile Hygiene

AEU-03M1B

- For light duty use and low speed prophylaxis
- Straight 1:1 e-type handpiece included
- Dual voltage 110V-240V



The **Battery Powered Portable Lab Motor** is a smart solution for lightweight lab benchwork and performing prophylaxis in the field! This small portable unit delivers 22k rpm and can perform 8 hours on a single battery charge.

Portable Lab Motor with Handpiece **AEU-03M1B**

Portable Lab Motor **AEU-03M1B-NHP**

Replacement Parts

1:1 Handpiece	AHP-101
---------------	----------------

Micromotor	AE-5M1-25
------------	------------------

Foot Switch	AE-7M1
-------------	---------------

Shop online at aseptico.com

Mont Blanc® World Class Implant Handpieces

The Mont Blanc Implant Handpiece is crafted from stainless steel and titanium, making it lightweight and durable. Precision ball bearing construction reduces friction to prevent overheating during surgical procedures. It features smooth surfaces that improve infection control and ensure easy cleaning, with the ability to remove the head for cleaning without tools.

- Electric (E-type)
- 80 Ncm maximum torque
- 20:1 reducer
- 15 - 2,000 rpm
(w/ 40k rpm micromotor)



AHP-85MB-X

No Depth Stop \$1,880



AHP-85MB-CX

Depth Stop \$1,920



AHP-85MBFO-CX

Fiber Optics & Depth Stop \$2,150



ASEPTICO SELECT HANDPIECES ARE EXCEPTIONAL PRODUCTS,
RIGOROUSLY QUALIFIED AND PERFORMANCE TESTED.

Impulsion Implant Handpiece Best Value!

AHP-85P-I

- Electric (E-type)
- 55 Ncm maximum torque
- 20:1 reducer
- 15 - 2,000 rpm
(w/ 40k rpm micromotor)



Rated to a max torque of 55 Ncm, the Impulsion Dental Implant Handpiece offers great value. This reliable handpiece uses sleeve bearings, making it a good handpiece for drilling an osteotomy at an affordable price.

Impulsion Handpiece- Push Button **AHP-85P-I**
 AseptiSpray™ Cleaner and Lubricant **AHP-09**



AseptiSpray™ is a must for proper cleaning and maintenance of handpieces.

AseptiSpray™ Ensuring Handpiece Longevity

Because of our exceptionally high standards, and because proper handpiece maintenance is so important for performance and longevity, Aseptico has been making its own handpiece lubricant for years to make certain that dentists have an excellent formulation for today's dental handpieces. AseptiSpray™ Advanced Handpiece Cleaner/Lubricant is designed for complete internal maintenance of turbine, air motor, contra angle, and E-type handpieces. Aseptico's formulation contains no CFC's and is ozone safe. For proper cleaning and maintenance of handpieces, it is a must.

AseptiSpray™ is affordably priced for the dental practice.

See all Mont Blanc® handpiece accessories, including AseptiSpray™ handpiece cleaner and lubricant, irrigation clips, cannulas, and more on pages 20-21.



For more information, watch our video *Handpiece Cleaning & Lubrication* <https://youtu.be/uVPCI6ouJLA>



1:1 Straight Surgical

AHP-64

- Electric (E-type)
- 1:1 low speed
- 300 to 40,000 rpm (w/ 40k rpm micromotor)



Anthogyr 1:1 Straight Electric High

Speed Surgical Handpiece is ideal for osteoplasty, working dentin, adjusting dentures, sectioning enamel and performing sinus lifts.

Straight Electric Handpiece [AHP-64](#)

AseptiSpray™ Cleaner and Lubricant [AHP-09](#)

Irrigation Clip [AE-8D](#)



Autoclavable AE-8D
Irrigation Clip for AHP-64

45° Surgical

AHP-79W

- Electric (E-type)
- 1:2.7 increaser
- 810 to 108,000 rpm (w/ 40k rpm micromotor)



W&H 45° High Speed Surgical Handpiece

is ideal for precise tooth separations and apical resections. The 45° head allows for optimum access to the posterior of the mouth. Available in non-fiber optic and self-generating fiber-optic options, this handpiece comes complete with a triple-spray head that guarantees sufficient cooling of the surgical bur and site.

45° Electric Handpiece w/LED [AHP-79W-FO](#)

45° Electric Handpiece [AHP-79W](#)

Minihead Endodontic

AHP-88MN

- Electric (E-type)
- Swing latch
- Speed range (w/ 30k rpm micromotor)
- 8:1 — 40 to 3,600 rpm



Anthogyr MicroNiTi Minihead Endodontic Handpiece has a swing latch head and provides unrivaled accuracy, whether it is being used with a rotary or reciprocating motor. The mini-head size allows for excellent access and line of sight during procedures. Made for nickel-titanium endodontic files, the MicroNiTi Minihead is compatible with all ISO rotary endo files.

8:1 **AHP-88MN**

AseptiSpray™ Cleaner
and Lubricant

AHP-09

Microhead Endodontic

AHP-88MNP

- Electric (E-type)
- Push button
- Speed range (w/ 30k rpm micromotor)
- 8:1 — 40 to 3,600 rpm



Anthogyr MicroNiTi Microhead Endodontic Handpiece has a push button head and provides the same unrivaled accuracy as other MicroNiTi series handpieces, whether it is being used with a rotary or reciprocating motor. The micro-head size allows for exceptional access and line of sight during procedures. Made for nickel-titanium endodontic files, the MicroNiTi Microhead is compatible with all ISO rotary endo files.

8:1 **AHP-88MNP**

AseptiSpray™ Cleaner
and Lubricant

AHP-09



ASEPTICO SELECT HANDPIECES
ARE EXCEPTIONAL PRODUCTS,
RIGOROUSLY QUALIFIED
AND PERFORMANCE TESTED

CALL TODAY!
425.408.9347
Or shop online at
aseptico.com



Ara Nazarian, DDS, DICOI
Implant Specialist
Troy, MI

*"I rely on Aseptico dental motors
and handpieces for consistent
reliability and superb
performance."*

1:3 Restorative

AHP-65TI-FO and AHP-65TI

- Electric (E-type)
- External irrigation
- 1:3 increaser
- Optional fiber optics
- Max 120,000 rpm (w/ 40k rpm micromotor)
- Perfect for high speed dentistry with your implant/surgical motor



With an external irrigation port and 1:3 increaser gearing, the AHP-65TI Restorative Electric High Speed Handpiece makes any surgical motor with irrigation into a restorative powerhouse. Ergonomic and light-weight design allows for optimum comfort during your procedure.

1:3 High Speed
w/ Fiber Optics

AHP-65TI-FO

1:3 High Speed

AHP-65TI

AseptiSpray™ Cleaner
and Lubricant

AHP-09

1:5 Restorative

AHP-72MK-FO

- * Electric (E-type)
- Internal irrigation
- 1:5 increaser
- Fiber optics
- Max 200,000 rpm (w/ 40k rpm micromotor)
- Perfect for high speed dentistry with your electric operative motor



Provides powerful, quiet, vibration-free operation with class-leading precision, the 1:5 Restorative Handpiece features Long Lasting Gears that are engineered to excel at every angle, and ceramic bearings that stand up to heavy use. Fiber optics optimize visibility with 100% glare-free illumination at a color temperature of 5500 K.

1:5 High Speed

AHP-72MK-FO

AseptiSpray™ Cleaner
and Lubricant

AHP-09

4-Hole Restorative

AHP-96MK

- Air-driven
- Internal irrigation
- Non-optic
- Max 320k rpm, 24 watts
- Max volume 62 dB
- Recommended for high speed dentistry



Simple to use technology, developed

for what you do every day. The 4-hole High Speed Handpiece features a clean, elegant shape and a virtually scratch proof smooth chrome surface. Manufactured using proprietary laser balancing technology, this handpiece delivers 24 watts of torque and features a premium cartridge for enduring precision and prolonged life.

MK Dent 4-hole High Speed
Restorative Handpiece

AHP-96MK

AseptiSpray™ Cleaner
and Lubricant

AHP-09

5-Hole Restorative

AHP-97MK

- Air-driven
- Internal irrigation
- Fiber optic glare-free, color accurate illumination
- Max 320k rpm, 24 watts
- Max volume 62 dB
- Perfect for high speed dentistry



It feels great in your hand and sports

a clean modern shape with a chrome surface. Fiber optics deliver 100% glare-free, color accurate illumination. The 5-hole High Speed Restorative Handpiece is equipped with the AeroPerformance Blade premium cartridge. Ceramic bearings stand up to heavy use and autoclaving.

MK Dent 5-hole High Speed Restorative Handpiece **AHP-97MK**

AseptiSpray™ Cleaner and Lubricant

AHP-09

6-Pin Restorative

AHP-82MK

- Air-driven
- Internal irrigation
- Fiber optic with LED color accurate illumination
- Max 350k rpm, 25 watts
- Max volume 55 dB



Excellent for high speed dentistry in-office or with a mobile pneumatic delivery system. More power, better sound, spectacular control. The MK Dent 6-pin High Speed Restorative Handpiece is built for the pro user who demands best in class. Reverse flow protection minimizes the entry of contaminants into the head. Fiber optics provide color-accurate illumination. Supremely finished with a scratch-resistant titanium surface. Dentists will enjoy working with this exceptional handpiece.

MK Dent 6-pin High Speed Restorative Handpiece **AHP-82MK**

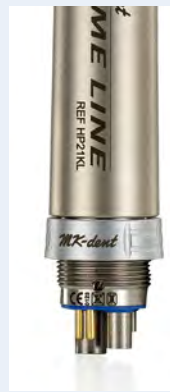
MK Dent 6-pin Coupler
AseptiSpray™ Cleaner
and Lubricant

AHP-82MK-QD
AHP-09

6-Pin Fiber Optic Coupler

AHP-82MK-QD

- Air-driven
- Works with LED bulbs and glass rod fiber optics
- Color accurate



AHP-82MK Handpiece shown with AHP-82-MK-QD Coupler attached.

This 6-Pin Fiber Optic Coupler comes with a non-retraction valve and water volume regulation. Works with both LED and glass rod fiber optics to provide 100% glare free and color accurate light.

6-Pin Fiber Optic Coupler **AHP-82MK-QD** \$350

CALL TODAY!
425.408.9347
Or shop online at
aseptico.com

Low Speed Straight

AHP-101

- Electric (E-type)
- Attaches to E-type air motor
- Also pairs with AHP-50MK
- 1:1 Straight Handpiece
- Post for Doriot-style prophylaxis angle attachment
- Recommended for use with Aseptico portable systems and lab motors



Designed to work with Aseptico® air-driven portable dental systems, the Low Speed Straight Handpiece is made of lightweight aluminum. The AHP-50 Low Speed Air Motor, which allows air turbines to accept E-type handpieces, is required to connect this handpiece to Aseptico portable dental systems.

Low Speed Straight Handpiece **AHP-101**

Low Speed Contra Angle

AHP-63MK

- Electric (E-type)
- Attaches to E-type air motor
- Also pairs with AHP-50MK
- Swing Latch
- 1:1 Contra Angle
- Recommended for low speed work on portable equipment or in an office operatory



MK Dent Low Speed Contra Angle Handpiece is a D-latch style low speed handpiece that can be attached to any E-type air motor.

MK Dent 1:1 Swing Latch Contra Angle

AHP-63MK

AseptiSpray™ Cleaner and Lubricant

AHP-09

4-Hole to E-Type Air Motor

AHP-50MK

- Air Driven
- Low Speed Air Motor (4-hole)
- Adapts an air system to accept an E-type handpiece



The Low Speed Air Motor accepts E-type handpieces. Recommended for use with Aseptico® air-driven portable dental systems or other in-office applications where you need to adapt an air system to an E-type handpiece.

Low Speed Air Motor

AHP-50MK

CALL TODAY! 425.408.9347 or shop online at aseptico.com



Recommended Systems

All Aseptico® Dental Motors and Micromotors are made in the USA. Each surgical system features autoclavable tubing which saves money and is better for the planet. Our experts can guide you on the best system for your application and budget. Here are some popular configurations.

Oral & Maxillofacial Surgery for the Specialist

- 7000 Series Motor (AEU-7000E)
- W&H Electric 20° 1:2 Oral Surgery Handpiece (AHP-77W)
- On/Off Foot Control (AE-7PM)



Oral Surgery, Implantology, Endodontics for the Specialist

- 7000 Series Motor with LED Illumination (AEU-7000L-70V)
- Mont Blanc® Implant Handpiece with Fiber Optics and Depth-Stop (AHP-85MBFO-CX)
- Multi-Function Foot Control (AE-70V2)



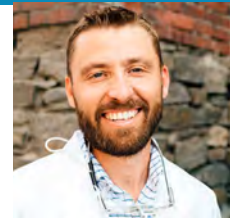
Oral Surgery, Endodontics for the General Dentist

- 7000 Series Motor (AEU-7000E)
- W&H Electric 45° High Speed Surgical Handpiece (AHP-79W)
- Anthogyr MicroNiTi Minihead Endodontic Handpiece (AHP-88MN)
- On/Off Foot Control (AE-7PM)



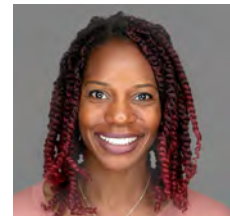
Implantology, Restorative, Endodontics for the General Dentist

- 6000 Series Motor (AEU-6000-70V)
- Mont Blanc® Implant Handpiece with Depth Stop (AHP-85MB-CX)
- Multi-Function Foot Control (AE-70V2)



Erich Jurges, DDS
Sage Brush Dental
Wenatchee, WA

"We were in need of a reliable implant/oral surgery motor for our busy practice that includes an Oral Surgeon. With such a heavy motor workload daily, it was imperative to pick a system with enough cutting power for both procedures daily. The 7000 Series is one piece of equipment that I would not want to practice without."



Joyce Jeffries, DDS
Cottonwood Oral & Maxillofacial Surgery
Albuquerque, NM

"Aseptico® surgical and implant motors have been a staple in my Oral and Maxillofacial Surgery practice. The quality, durability, ease of use and customer service have been unmatched. I wholeheartedly recommend them for all your surgical motor and implant handpiece needs."

CALL TODAY! 425.408.9347 or shop online at aseptico.com



AseptiSpray™ Handpiece Cleaner and Lubricant

AseptiSpray™ is a must for proper cleaning and maintenance of handpieces. It keeps handpieces working efficiently and ensures long life and durability.

AseptiSpray™ w/ Nozzle (8.8 oz can) **AHP-09**

3 or more (each)

Nozzle only **AHP-09N**



Mont Blanc®/Impulsion Handpiece Accessories

Depth Stop Attachment **AHP-85MB-STP**

Black Irrigation Clip **AHP-85MB-CLP**

Cannula **AHP-85MB-CAN**

Cannula Clip Set *includes* **AHP-07**

Small Clip **AHP-05**

Large Clip **AHP-06**

Cannula and Tubing **AHP-04**

Cannula and Tubing **AHP-04**

Small Clip **AHP-05**

Large Clip **AHP-06**

Y Connector **AE-2**

Autoclavable Black Irrigation Clip
for Mont Blanc® Handpiece

AHP-85MB-CLP



CALL TODAY! 425.408.9347 or shop online at aseptico.com

Tubing & Accessories

Autoclavable surgical tubing saves money and prevents waste. Disposable tubing sets cost about \$12 per set compared to less than \$1 per use for autoclavable tubing that lasts for approximately 100 uses. Autoclavable irrigation clips are money-savers too.

Irrigation Tubing Set for IV Bags (For AEU-6000 and 7000 series)	AE-23
Irrigation Clips (qty: 10)	AHP-03
Irrigation Pump Tubing Section (qty: 10)	AE-23-10

Foot Controls

Multi-Function Foot Control

AE-70V2

The Multi-Function Foot Control replaces the need to adjust the unit manually during procedures, providing the operator with variable speed control or on/off pedal, forward-reverse, torque adjustment, irrigation flow rate, and memory functions for implants and endodontics. The Multi-Function Foot Control is available with a standard 6 ft. cable (AE-70V2) or a 10 ft. cable (AE-70V2-10). Made in USA.

Multi-Function Foot Control with 6' cable	AE-70V2
Multi-Function Foot Control with 10' cable	AE-70V2-10

On/Off Foot Switch

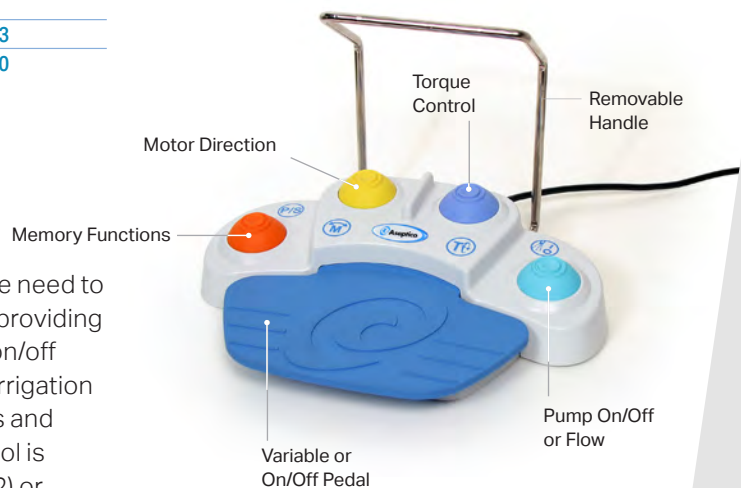
AE-7PM

On/Off Foot Switch for Aseptico dental motors: AEU-7000 Series, AEU-6000 Series, AEU-27A, and portable systems AEU-350, AEU-525/AEU-525S. Made in USA.

Foot Switch with 6' cable	AE-7PM
Foot Switch with 10' cable	AE-7PM-10

Replacement Micromotors

AEU-7000L micromotor and 6' fiber optic cable	AE-230L-40
6000 Series and 7000 Series Implant Motors micromotor and 6' cable	AE-230M-40
AEU-27A Advanced Endodontic Motor micromotor	AE-250-30
AEU-5000 Electric Operative Motor micromotor	AE-240-40
Micromotor and Cable for: AEU-25 Endo DTC® AEU-707AV2 Implant/Surgical Motor AEU-17BV2 SurgiMotor II	AE-4B-30
AEU-10SS Light Duty Lab Motor replacement micromotor	AM-103B



Aseptico[®]

Trusted Worldwide



INNOVATIONS & UTILITY

We are Committed to Excellence
in Everything We Do and
Every Product We Sell



Compricart II Delivery System

ADU-20B

- One high speed and one low speed handpiece connection
- High volume evacuator and saliva ejector
- Large stainless steel instrument tray (13.5" x 9.75")
- All day water system with two liter self-contained water bottle

Roll the Compricart II Dental Cart from room to room with ease! Great for hospitals and expanding dental offices, the simple controls of the Compricart II make operation stress-free. A compact design, ample work surface, stainless steel instrument tray, integrated water supply, and venturi suction (high volume and saliva ejector) round out the features of this versatile platform. Just connect to an air source – no central vacuum required! Including the optional AWS-1C allows an external scaler to use the cart's water supply.

Compricart II	ADU-20B
Water Connection for External Scalers	AWS-1C

Options

Fiber Optic Upgrade Kit 5-hole	AA-19LED-04
Fiber Optic Upgrade Kit 6-pin	AA-19A-06

Replacement Parts

Complete HVE Assembly	330461
Disc Foot Control w/ Water Toggle	AA-43W
Air/Water Syringe	TA-90D
2L Water Bottle	730665



AEU-5000: See details on page 10

FRIENDLY AND PROFESSIONAL SERVICE. CALL TODAY! 425.408.9347





Automated Air Delivery System

ADU-07 and ADU-07A

- Choose 2 or 3 handpiece system
- Includes 3-way air/water syringe
- Wall or cabinet mount
- Optional fiber-optics
- Includes foot control

The Automated Air Dental Delivery System is a pneumatic handpiece control system that gives you everything you need at a price you can afford. Highly customizable, select from a 2-handpiece system with manual control, or 3-handpiece system with automatic selection and individual air and water adjustments. Both models include air pressure gauge, 3-way air/water syringe, foot control, and water flow adjustments. Flat top design is ideal for mounting into cabinets. Requires connection to air and water sources.

Options

2-Handpiece/Manual Control	ADU-07
3-Handpiece/Automatic	ADU-07A
5-hole Fiber Optic Upgrade	AA-19LED-04
6-pin Fiber Optic Upgrade	AA-19A-06

Replacement Parts

Disc Foot Control w/ Water Toggle	AA-43W
Air/Water Syringe	TA-90D
Autoclavable Tips for Air/Water Syringe	TA-1



Folding Arm Wall Mount

Folding wall mount for ADU-07, ADU-07A and ADU-04, Dental Delivery Systems

AA-05A \$450



Manual Air Delivery System

ADU-04

- 2-handpiece control system
- 3-way air/water syringe
- Optional independent water
- Ideal for arm or wall mounting
- Requires connection to air

The Manual Air Delivery System is a pneumatic handpiece control system for two handpieces. It includes a 3-way air/water syringe and disk foot control. Requires connection to air and water sources or use optional independent water.

Manual Air Control System ADU-04

Clean Water System with 1 Liter Bottle (pictured) NWS-71

Replacement Parts

Disc Foot Control	AA-42
Air/Water Syringe	TA-90D
1L Water Bottle (for NWS-71)	730471
Autoclavable Tips for Air/Water Syringe	TA-1



FRIENDLY AND PROFESSIONAL SERVICE. CALL TODAY! 425.408.9347

Powered Trolleys

ATC-12V2 and ATC-15

- Keeps equipment organized and solves operatory space concerns
- Storage bin for foot pedals or other items
- Dual outlet with coiled AC power cord
- Adjustable height to easily store under a counter: 26.4" to 37.4" (67-95 cm)
- Four shelves w/ 3 removable stainless steel trays

Aseptic Powered Trolleys give dental teams the ability to easily roll dental motors, scalers, lasers, surgical systems or other electrical equipment from operatory to operatory. Available in large and standard sizes, each Powered Trolley is adjustable in height and features four shelves of storage with removable stainless-steel trays that fit securely into each shelf. High-quality, sturdy trolleys move and turn with ease and fit into almost any small space.

Standard Powered Trolley **ATC-12v2**

Cart size: 26.4-37.4" x 15.75" x 16.5" (67-95 x 40 x 42 cm)
Tray size: 11.3" x 9" (28.8 x 22.8 cm)

Large Powered Trolley **ATC-15**

Cart size: 26.5-38" x 19.5" x 19.75" (68-97 x 50 x 50 cm)
Large Tray: 15.4" x 11" (39.1 x 28 cm)



Aseptic Powered Trolleys feature two heavy duty electrical outlets that are certified to safety standards and a sturdy storage bin designed to hold foot pedal or other items.

FRIENDLY AND PROFESSIONAL SERVICE. CALL TODAY! 425.408.9347

HandiDam[®] pre-framed dental dam



- Pre-framed, flexible design facilitates access to the oral cavity for suction or X-rays
- Superior elasticity and tear-resistance
- Saves time—eliminates the need to remove and replace traditional dam during the procedure
- Ergonomic and comfortable for greater patient acceptance
- Meets FDA Powder-Free standard
- Extremely low protein content reduces patient irritation (<50 micrograms)
- Available in Latex or Latex-Free

HandiDam[®] Latex (Blue)

Qty 20, I-70BM
Qty 100, I-70BM-100

HandiDam[®] Latex-Free (Mauve)

Qty 20, I-70LF
Qty 100, I-70LF-100

Dental Dam Punch

Ivory Style Punch I-19

Dental Dam Forceps

University of Washington Style Forceps I-14



I-19

Recommended for HandiDam[®]

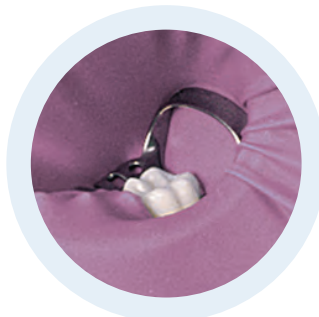


I-14

Dental Dam Clamps

Our five most popular clamps. See full selection at aseptico.com

Dental Dam Clamp \$15 each



TECHNIQUE CHAIN & GRID



- 10 sets per box
- 14k gold chain
- 3 grid shapes available

Technique Chain & Grid easily attaches to a pre-emerged tooth, so that an orthodontic device may be used to draw the tooth into proper position. Aseptico is the originator of this remarkable traction system that professionals use worldwide.

Cuspid (qty: 10) AMA-09A

Bicuspid (qty: 10) AMA-09A2

Incisor (qty: 10) AMA-09A3



Cuspid 4.5 x 3.5 mm



Bicuspid 4.5 x 3.0 mm



Incisor 4.5 x 3.5 mm (less concave)

K-211
Universal labial cavities on anteriors



K-5
For lower molars



K-9
Most popular anterior clamps



K-90N
Most popular anterior clamps



K-8A
For lower molars, with strong festooned beaks



FRIENDLY AND PROFESSIONAL SERVICE. CALL TODAY! 425.408.9347

Aseptico[®]

Trusted Worldwide



MOBILE & PORTABLE DENTISTRY

The United States Military and Humanitarian Dental Groups Around the World Rely on Aseptico Mobile and Portable Dental Equipment





READY, SET, GO

GO Ultra Portable Dental Delivery System

Our Most Advanced Technology

AEU-350

- Simple to operate for restorative & hygiene
- Integrated brushless motor with LED illumination
- Powerful vacuum and air flow
- Exceptionally quiet operation
- Ultra-compact and lightweight
- Meets carry-on luggage requirements
- Air filter reduces airborne particulates
- Use anywhere in the world with electric or battery power
- NEW for 2023: Customer-replaceable bacterial-viral filter. Call for more info!

Options

24 VDC Battery	AA-350-BATCAB2
Power Cord	

Replacement Parts

Micromotor w/5'cable	AE-242SC-40
Water Supply Bottle	730786
Waste Collection Tank	330811
Air Filter	AA-350-FIL
HVE Valve and Hose Assembly	AA-350-HVE
Saliva Ejector Valve and Hose Assembly	AA-350-SAL
Foot Switch	AE-7PM
Power Cord	840041
Power Cord Pouch	410222
Hose Storage Pouch	410225

Not for sale in Canada.

Designed for Ease-of-Use and Reliability

The GO Ultra Portable Dental System addresses the challenges and opportunities facing dental professionals today and capitalizes on Aseptico's years of experience building the world's leading portable dental units. Designed for operator ease-of-use and outstanding reliability, The GO Ultra Portable system is capable of restorative dentistry and hygiene functions. At only 34 pounds, the GO system is fully ten pounds lighter than the Aseptico® Express system — and so compact it qualifies as carry-on luggage for air travel. The GO delivers powerful airflow and suction yet operates more quietly and cleanly than standard air compressor units (it even has an air filter to reduce airborne particulates). It can operate anywhere in the world — and if there is no electrical power, there is an option for it to operate on a 24-volt battery.

GO Ultra Portable **AEU-350** **\$7,450**
Dental Delivery System



Visit [aseptico.com](https://www.aseptico.com) for videos



MEET THE GO Ultra Portable!

The only portable dental system that can operate on external battery power.



Powerful Electric Motor

5k to 200k rpm range is ideal for prophyl and restorative.



Super Compact!

22" x 13" x 9.2" fits into the airline overhead as carry on luggage

Quieter Operation

A quieter vacuum system that turns on only when HVE and saliva ejector are removed from their holders creates a quieter experience for both operator and patient.

Faster Drying for Sealants

Syringe Performance:
 • 80 psi initial
 • 50 psi continuous

More Powerful Suction!

New vacuum blower technology

Easy and Light

Only 35 pounds! 10 pounds lighter than the Aseptico® Express, the world's #1 system!

1 Liter Waste Capacity

Easy, clean removal of waste

500 mL Water Capacity

Plenty of water capacity for restorative cases

Impact Resistant

Durable, wheeled case with comfortable handles.



Expert Opinion: Dr. Wade Banner



Dr. Wade Banner, owner of In Motion Dentistry, and his team, provide house-call dentistry throughout Southern California. The practice team relies on Aseptico® portable equipment — including the new GO Ultra Portable system. WATCH OUR VIDEO as Dr. Banner relays his experience using the GO Ultra Portable system.

Can Operate on External Battery Power

Powering the GO Ultra Portable Dental System from a 24 VDC battery is an option for those who work off-the-grid. The cable is purchased from Aseptico, and the customer supplies the 24V battery. Depending upon battery type and capacity, the GO can operate for 2-4 hours of active use.



Plug in Anywhere

100-240 VAC & 24VDC input options

Weighted & Omnidirectional Foot Pedal

Stays in place and can be activated from any angle



OUR MOST ADVANCED TECHNOLOGY!
 CALL TODAY! 425.408.9347

Express Portable Dental System

ADU-17A and ADU-17A2

ADU-17X and ADU-17X2

- Available with one or two air handpiece connections
- High volume evacuator and saliva ejector
- Built-in maintenance free compressor
- Water port for Cavitron/scaler
- High capacity 1 gallon waste container
- 110V or 220V switchable voltage
- 44-48 lbs (20-21.8 kg)
- 10.5" x 14.5" x 24" (27 x 36 x 61 cm)

Aseptico's most popular portable dental systems, the Express Air and Express II portable dental systems are fully self-contained, lightweight, reliable performers that provide everything a dentist or hygienist needs to perform effectively in the field. These powerful units feature up to two air-driven handpiece connections, high volume and saliva ejector suction, internal water reservoir, 3-way syringe, and integrated air compressor. They are transported using a pullout handle and built-in wheel assembly. The system's compact size allows for convenient storage, while the impact-resistant case makes the Express ideal for any field environment. Designed for global use, all Express systems are compatible with 110V or 220V power sources and come in under the airline baggage weight limit.

Express Air – features variable rheostat foot pedal. In the Express Air dental system, the handpiece only operates when the variable rheostat foot pedal is depressed; handpiece operates independently from suction and 3-way syringe. (Dentist preferred.)

Express Air one handpiece connection [ADU-17A](#)

Express Air two handpiece connections [ADU-17A2](#)

Express II – features on/off electric foot switch. In the Express II dental system all components are activated by the on/off foot switch. This configuration is sometimes desirable for special needs patients or other specialized applications. Please call for more information. (Hygienist preferred.)

Express II one handpiece connection [ADU-17X](#)

Express II two handpiece connections [ADU-17X2](#)

Fiber Optic Upgrade Kits

5-hole [AA-19LED-04](#)

6-pin [AA-19A-06](#)

6-pin LED handpieces [AA-19EGEN-04T6*](#)

*Will not function with incandescent bulbs.

Consult your Aseptico sales rep for details.

Liz LaJoie, RDH

Director of Clinical Field Teams

Aria Care Partners

Louisburg, KS



"We love the ease of this piece of Aseptico equipment! It's essential for our business to run efficiently being able to utilize everything we would have in a private office setting while providing care in long-term care facilities. No sacrifice in power or suction either!"

Better, Faster Sealants!

Handpieces sold separately

Recommended handpieces see pages 12-18.



CALL TODAY!
425.408.9347
Or shop online at
aseptico.com



Transport III Portable Dental System

AEU-525S and AEU-525

- High torque electric motor with restorative and endodontic programs
- Fiber optic electric handpiece connection
- High volume evacuator and saliva ejector
- Quiet, intuitive, powerful
- Built-in maintenance free compressor
- Water port for Cavitron/scaler
- Dual voltage
- Optional fiber optic piezo scaler
- 57-63 lbs (25.8-28.6 kg)
- 17.9" x 10.4" x 22.1" (45.5 x 26.4 x 56.1 cm)

Delivery module and user-interface panel mount externally, placing controls and instruments at a comfortable level. AEU-525 has water connection for external scalars. AEU-525S includes built in piezo ultrasonic scaler with LED and three tips.



Powerful air flow!

The Transport III is Aseptico's most capable portable dental system. Features include noise reduction technology, an intuitive user interface, and 40k rpm brushless autoclavable micromotor. It is easy to set up, operate, and tear down. All components fit neatly into the impact resistant carrying case with inset handle and wheels.

Delivery module and user interface panel mount externally, placing controls and instruments at a comfortable level.

Dual level fluid sensors alert the user when the waste tank is 85% full for better procedure planning. The Transport III will then shut off the compressor before the tank exceeds capacity. The externally mounted waste container and optional amalgam separator means faster and cleaner waste disposal.

Transport III w/Scaler AEU-525S
Transport III AEU-525

Options

Amalgam Separator Kit	AA-525AMAL
Micromotor w/ 6' cable	AE-240-40
Foot Switch with 10ft cable	AE-7PM-10

Replacement Parts

Micromotor w/5' cable	AE-240SC-40
Waste Tank Assembly	330603
Foot Switch	AE-7PM
Power Cord 110V	840049
Power Cord 220V	840007
Water Reservoir (white)	730471

Replacement Scaler Tips For AEU-525S Only

Slim Universal	ASC-10-PE38
Thin Subgingival	ASC-10-PE37
Power Universal	ASC-10-PE39

Handpieces sold separately

Recommended handpieces see pages 12-18.



ASEPTICO PORTABLE SYSTEMS ARE MADE IN THE USA. CALL TODAY! 425.408.9347

Taskforce Portable Dental System

ADU-12DCE

- New look and case design for 2023
- Lightweight and easy to carry, under 33lbs!
- Two air handpiece connections
- Powerful saliva ejector vacuum
- Built-in maintenance free compressor
- Water port for Cavitron/scaler
- 110V or 220V switchable voltage
- 12.5" x 17.5" x 7.5" (31.8 x 44.5 x 19.1 cm)

The most compact pneumatic portable dental system, the Taskforce, represents the best value on the market. At 32.6 pounds the Taskforce is easily carried from location to location. This unit includes two air-driven handpiece connections (high speed /low speed), low volume suction, and air water syringe, making it the ideal system for mobile hygiene. Simple and easy to use, the Taskforce can be set up or put away in just minutes.

Taskforce

ADU-12DCE

Optional Accessories

Handpiece Extension Arm	AA-12A
Stainless Steel Cuspidor with Solids Trap 5" (12.7mm) diameter for convenient expression during treatment	AA-26SS
High Volume Tip Adapter enables use of standard 11mm high volume tips	AA-12HVE

Fiber Optic Upgrade Kits

5-hole	AA-19LED-04
6-pin	AA-19A-06
Fiber Optic for 6-pin LED handpieces	AA-19EGEN-04T6*

*Will not function with incandescent bulbs. Consult your Aseptico sales rep for details.

Replacement Parts

Lid Standoff Bracket	AA-12CSB2
----------------------	-----------

COL (Ret) Robert Meyer, DMD

Executive Director
Christian Dental Society

"I have used the Aseptico Taskforce Deluxe in 25 developing countries on dental missions. The unit is lightweight, and has always functioned well with minimal power requirements. I have recommended its use to many needing a lightweight, reliable dental operating unit."



Handpieces sold separately

4-Hole to E-Type Air Motor AHP-50

Low Speed Air Motor (4-hole) adapts air turbine to accept E-type handpieces.

Call for more information.



4-Hole Restorative AHP-96MK

Air-driven
Internal irrigation
Non-optic
Max 320k rpm
Max volume 62 dB

Recommended for high speed dentistry
See page 16.



ASEPTICO PORTABLE SYSTEMS ARE MADE IN THE USA. CALL TODAY! 425.408.9347

Lightweight Portable Delivery Systems

ADU-04ST and ADU-03ST

- Compact design and case under 15lbs (6.8kg)
- Customizable handpiece and vacuum options
- 3-way air/water syringe
- 25 ft. air line to connect to any air source
- Instrument tray
- Padded carrying case
- Carrying case: 25" x 11.5" x 11.5" (63.5 x 29 x 29cm)
- Requires air compressor for operation
- Quick disconnect options, .25 QD-Standard or 3/8 Schrader (optional)

Restorative System w/ 2 HPC Connections [ADU-04ST](#)

Restorative System w/o HPC Connections [ADU-03ST](#)

Optional Upgrades

High Volume Suction	AA-21ST
Saliva Ejector	AA-25ST
5-hole Fiber Optics	AA-19LED-04
6-pin Fiber Optics	AA-19A-06
Fiber Optics for 6-pin LED handpieces	AA-19EGEN-04T6*

The ADU-04ST is designed for dentistry and can run either a high-speed or low speed handpiece (shown with high volume suction and saliva ejector suction options added).



The ADU-03ST is designed for hygiene and sealants (shown with optional high volume suction added).

Airpac III Portable Compressor

AA-100-110

- 1.0 horsepower, 100 psi oil-less motor
- Air delivery 3.1 CFM at 40 PSI
- Built-in wheels and pull handle
- Available in 110V
- Not available in Canada
- Weight: 46 lbs. (20.87 kg)
- Size: 17.93" W x 22.06" L x 10.43" H (45.5 cm W x 56.0 cm L x 26.5 cm H)

The Airpac III Portable Compressor is a reliable 1.0 horsepower, 100 psi air compressor, that delivers 3.1 CFM at 40 PSI. Built by Aseptico to stand-up to heavy use and travel, the compressor is secured in its own super duty carrying case with built-in wheels and pull handle. The Airpac III includes an air storage tank and automatic pressure switch control.

110V Compressor [AA-100-110](#)





AMC-15 Mobile Dental Cart

Designed for Easy and Affordable Mobility, the AMC-15 Mobile Dental Cart is equipped for general dentistry with two automatic high speed air connections, one low speed handpiece connection, internal vacuum and air, water supply, large waste tank with automatic overflow protection, and amalgam separator.

- No plumbing required!
- 2 automatic high speed air handpiece connections (4-hole; non-fiber optic)
- 1 automatic low speed handpiece connection (4-hole; non-fiber optic)
- High & low volume suction with automatic overflow protection and solids trap
- 3-way air/water syringe
- Quick connect for ultrasonic scaler
- Amalgam Separator
- Wet/dry foot control
- Available in 110V or 220V
- Operating pressure 80 psi
- High volume vacuum 6.0 SCFM @ 0 in Hg, 3.6 SCFM @ 4 in Hg
- Low volume vacuum 1.3 SCFM @ 1.5 in Hg
- Noise Level 63 dBA @ 3'4" (1 meter)
- Weight 139 lb (63 kg)
- Dimensions 23.5"W x 30" L x 36.5" H (56.7 x 76.2 x 92.7 cm)
- Optional: auxiliary arm with accessory tray

AMC-15 Mobile Dental Cart

AMC-15

Options

Auxiliary Arm with Accessory Tray

AA-20A

Recommended Handpieces

Air-Driven *see pages 16-17*

Replacement Parts

3-Way Air/Water Syringe with Tip

TA-90D

Amalgam Separator Filter

730595

Clear 1-liter Water Bottles w/Level Indicators

730631-01

Two 1-liter Water Bottles

730471

Wet/Dry Foot Control

AA-43W

Power Cord 115V

840049

Power Cord 230V

840007



Equipped for general dentistry, the AMC-15 has been recognized for its innovative technology, however, we are most proud of its affordable price — which includes an amalgam separator!



ASEPTICO PORTABLE SYSTEMS ARE MADE IN THE USA. CALL TODAY! 425.408.9347

AMC-25 Mobile Dental Cart

The **AMC-25 Mobile Cart** is a superior solution for providing general dental care in nursing homes, hospitals, or anywhere a mobile dental unit is needed. Available optional accessories allow for customizing this dental cart to meet your needs, including the ability to add electric handpieces, handpiece illumination, and much more!

- No plumbing required!
- 2 automatic high speed air handpiece connections (4-hole; non-fiber optic)
- 1 automatic low speed handpiece connection (4-hole; non-fiber optic)
- High and low volume suction with automatic overflow protection and solids trap
- 3-way air/water syringe
- Quick connect for ultrasonic scaler
- 2 hospital-grade outlets for accessories
- Wet/dry foot control
- Dual voltage 110V or 220V
- Operating pressure 80 psi
- High volume vacuum 7.6 SCFM @ 1.3 in Hg, 5.6 SCFM @ 4 in Hg
- Low volume vacuum 2.2 SCFM @ 1.5 in H
- Noise Level 65 dBA or less @ 3'4" (1 meter)
- Weight 167 lb (75.8 kg)
- Dimensions 23.5" W x 30" L x 36.5" H (56.7 x 76.2 x 92.7 cm)
- Optional: integrated electric motor, fiber-optic illumination for handpieces, ultrasonic scaler, curing light, amalgam separator, external vacuum/air/water hospital connections, auxiliary arm with accessory tray

AMC-25 Mobile Dental Cart AMC-25

Options

Integrated Electric Motor	330674
2 Fiber Optic HP Connections	
5-hole (ISO-B)	AA-19LED-25CK5
6-pin (ISO-C)	AA-19A-25CK
Piezo Scaler	ASC-10-25CKL
Amalgam Separator	AA-20AMAL-CK
Auxiliary Arm with Accessory Tray	AA-20A
Hospital Kit (external air, water and vac connections)	AA-25HK

Replacement Parts

Micromotor	AE-240SC-40
Wet/Dry Foot Control	AA-43W
Air/Water Syringe	TA-90D
1L Water Reservoir – Clear	730631-01
1L Water Bottle – Opaque (each)	730471
Strainer	730745
Amalgam Canister	730595

AMC-25
Affordable
& Easy to
Customize



The AMC-25 comes standard with pneumatic handpiece connections, but can be configured for electric handpieces, or a combination of air-driven and electric.

CALL TODAY! 425.408.9347





Chairs and Stools Available in Red, Gray and Blue.



AseptiStool and Hydraulic AseptiStool come with padded carrying case.



AseptiStool

ADC-08

- Set-up and store in seconds
- Includes padded case – no loose parts to misplace!
- 300 lb weight capacity
- Adjustable seat height: 19" - 22" (48.3-55.9 cm)
- 15 lbs (6.75 kg)
- Padded carrying case: 18" x 22" x 8" (48 x 53 x 23 cm)

Durable, adjustable and foldable, the AseptiStool Portable Dental Stool is the perfect seating solution for any clinician. Its one-piece design sets up or stores in seconds, and it swivels on four casters for easy mobility during treatment. It is height adjustable, lightweight, and folds up for simple storage in the included padded travel case. Made in USA.

AseptiStool [ADC-08](#)
Replacement Padded Carrying Case [410093](#)



Hydraulic AseptiStool

ADC-10

- Easy set-up and storage
- Includes padded case
- 300 lb weight capacity
- Hydraulic adjustable height: 18" - 25.5" (45.7 - 64.8 cm)
- 19 lbs (8.6 kg)
- Padded carrying case: 26" x 26" x 11" (56 x 56 x 28 cm)

With hydraulic adjustable height, the Hydraulic AseptiStool gives the mobile dentist the comfort and flexibility of doing dentistry in the office. It is easy to set up, tear down and transport in its included padded case. Even with its sturdy construction and high weight capacity, the stool is lightweight and carrying it into any mobile dental scenario is simple. Made in USA.

Hydraulic AseptiStool [ADC-10](#)
Replacement Padded Carrying Case [410213](#)



ALL ASEPTICO SEATING IS MADE IN THE USA. CALL TODAY! 425.408.9347



Sara Luetke, RDH
Founder Sound Dental Care

"Having quality products like Aseptico patient/operator chairs and Transport III portable delivery systems gives our providers, patients, and facilities confidence in the care that a mobile alternative practice can provide. The support staff at Aseptico is always willing to help when needed. 100% satisfaction guaranteed."



AseptiChair

ADC-01

- Sturdy, high-strength steel construction
- Lightweight, only 30 lbs (13.5 kg) in case!
- 300 lb weight capacity
- Backrest adjusts from fully upright to supine
- Price includes padded case, arm slings, and headrest cushion –no hidden charges and no loose parts to misplace!
- Adjustable seat height: 11" - 22" (11 - 55.9 cm)
- Padded carrying case: 23" x 34" x 8" (58 x 86 x 20.3 cm)

The AseptiChair's sturdy rolled steel construction is lightweight yet strong, making it perfect for portable dentistry. It is adjustable to five positions, with seat height ranging from 11 to 22 inches. The toe board folds down, allowing this portable dental chair to be used for examination. The included carrying case makes mobility and transportation simple. No assembly required.

AseptiChair ADC-01

Replacement Parts

Replacement Padded Carrying Case	410193
Replacement Locking Pin	460445-08
Endcap Heavy Duty 1"	850026

Hydraulic AseptiChair

ADC-02

- Hands-free height and back adjustment
- Adjustable with patient in chair
- 300 lb weight capacity
- No external electricity or air required
- Handle and wheels for easy mobility
- 69 lbs (31.3 kg)
- Hydraulic adjustable seat height: 11" - 33" (27.9 - 83.8 cm)
- Folded dimensions: 33" x 22" x 18" (83.8 x 55.9 x 45.7 cm)

The Hydraulic AseptiChair provides hands-free operation and is the only portable chair available with adjustability functions comparable to a standard dental chair. All chair lift functions are foot actuated hydraulic for hands-free operation; no external power is required. The AseptiChair provides comfortable patient seating for patients up to 300 lbs. Easy move wheels.

Hydraulic AseptiChair ADC-02
Hydraulic Assembly Only 330629

Replacement Parts

Replacement Dust Cover	410210
------------------------	--------



Portable LED Exam Light

ALU-40LED

- Adjustable LED with seven beam diameters
- Durable construction
- Includes padded carrying case
- Optional Amber UV filter for working with composites
- 12 lbs (5.4 kg)
- Padded carrying case: 45" x 9" x 5.5" (114.5 x 23 x 14 cm)

The **Portable LED Exam Light** provides high-intensity LED light with seven beam diameter settings. It features a compact lamp head with adjustable intensity, flexible gooseneck, telescoping tripod stand and padded carrying case. When a standard electric outlet is not available, an auxiliary DC input allows 12V and 24V battery operation in the field.

Portable LED Exam Light	ALU-40LED
Optional Amber UV Filter	461974
Replacement Padded Carrying Case	410084

Portable Tray Stand

ATC-03CF

The Portable Tray Stand is a sturdy and necessary addition to any mobile operator. Standard size stainless instrument tray removes easily for autoclaving. It weighs less than 9 pounds and folds into included case when work is done. Made in USA.

Portable Tray Stand	ATC-03CF
----------------------------	--------------------------



CALL TODAY! 425.408.9347

FOR FRIENDLY AND PROFESSIONAL CUSTOMER SERVICE.

Portable Sterilizer

ASU-12-110 and ASU-12-230

- Compact and portable
- 18-minute sterilization cycle (24-minute total cycle time)
- Only 6 minutes to reach sterilization temp
- Temperature: 250°F (121°C)
- 11.5 lbs (5.2 kg)
- 9 liter capacity

The **Portable Dental Autoclave** is designed to sterilize solid, unwrapped instruments in a 121°C saturated steam process during 18-minute sterilization cycle. Use distilled or deionized water only.

110V Sterilizer

[ASU-12-110](#)

230V Sterilizer

[ASU-12-230](#)



Portable Saliva Ejector

AA-20

- Great for mobile dentistry or as a backup for sedation dentistry
- Powered by rechargeable battery pack, wall outlet or 12 VDC vehicle source
- Up to 60 minutes of continuous use on a single charge
- 800cc waste canister with float shut-off
- 6.3 lbs (2.9 kg)
- 9" x 7" x 8" (22.8 x 17.8 x 20 cm)

Great for mobile dentistry or as a backup for sedation dentistry, the Portable Saliva Ejector can be powered by a wall outlet, 12V source, or rechargeable battery pack. It features an adjustable 80 - 550 mm Hg vacuum range and 800cc waste canister with float shut-off. Includes padded carrying case.

Portable Saliva Ejector

[AA-20](#)

Replacement 800 ml Canister

[AA-20CAN](#)

Bacteria Filters

[AA-20BF-2](#)

Vacuum Pump Tube Assembly

[330668](#)



In addition to providing easy portable suction, the Portable Saliva Ejector fulfills the legal requirement for a back-up suction system in the event of power or suction failure.



CALL TODAY! 425.408.9347

FOR FRIENDLY AND PROFESSIONAL CUSTOMER SERVICE.

Customer Service

425.408.9988

Monday-Friday

6:00 a.m.-4:30 p.m. PST

Customer service representatives

are standing by to help.

repairs@aseptico.com

Quality System

Aseptico's Quality Management System is certified for full quality assurance by the Conformity Assessment Body British Standards Institution (BSI) under the Medical Device Directive 93/42/EEC Annex II.3, and ISO 13485 which is recognized worldwide.

Return and Repair Policies

- Products that have been in clinical use cannot be returned for credit.
- Service and repair charges are billed on credit card. Customer is expected to accept charges up to \$750 without advance notification. Minimum service/repair charge is \$150.
- All returns and repairs require prior authorization. Contact Aseptico Customer Service for a Return Material Authorization number (RMA#).
- The RMA# must appear clearly on the exterior of the package being returned or it may be rejected and returned to the sender.
- Packages received without prior authorization are not the responsibility of Aseptico. Aseptico reserves the right to dispose of such packages and their contents 30 days after receipt with no obligation to the sender.
- The sender is responsible for proper packaging and for all costs for return shipment to Aseptico.
- New products may be returned for full credit (less shipping charges) under a Return Material Authorization number within 30 days of date of original invoice.

Warranty

Aseptico warrants its products against defects in material or workmanship for a period of two (2) years, from date of original invoice. This warranty is not transferrable. Some handpieces are warranted for one year under the same conditions. Other handpieces and expendable components, such as air turbines and light bulbs, are covered by shorter warranty periods, or have no warranty. Aseptico's sole obligation under product warranty is (at its sole option and discretion) to repair or replace any defective component or product in part or whole. Aseptico shall be the sole arbiter of such action. In the event of alleged defect under warranty, the purchaser is to notify Aseptico's Customer Service Department promptly. Customer Service will provide instructions, usually directing that the product be returned for service. Shipment to Aseptico and the cost thereof is always the responsibility of the purchaser.

Accidental misuse, inappropriate installation, or failure to perform directed maintenance voids the warranty.

Aseptico does not assume, under this warranty, any risks or liabilities arising from the clinical use of its products, whether or not such use involves coincidental utilization of products manufactured by others. Deliberately defacing, modifying, or removing the serial number voids the warranty.

Sales

425.408.9347

Monday-Friday

6:00 a.m.-4:30 p.m. PST

Sales representatives

are ready to assist you.

orders@aseptico.com

Ordering Policies

- Aseptico accepts Visa, MasterCard, Discover, and American Express.
- Open account is available only if credit is approved in advance.
- Freight costs are added to all invoices.
- All orders are shipped FOB origin.
- Delinquent accounts are subject to 1.5% monthly interest, attorney's fees, collection and court costs when needed to satisfy debt.
- Prices subject to change without notice.
- Please visit: aseptico.com/warranty-policies for additional warranty and repair policy information.

Sales Tax

Aseptico uses a tax service (Avalara) to calculate and apply state sales tax to invoices for all states that Aseptico is registered to collect/remit sales tax. We reserve the right to register in additional states at any time and begin collecting/remitting sales tax.

The amount of tax charged on your order will depend upon many factors including type of item purchased and destination of the shipment. Factors can change between the time you place an order and the time of invoicing, which could affect the calculation of sales taxes. The amount appearing on your order as sales tax may differ from the sales taxes ultimately charged.

Customer is responsible for any applicable state sales or use taxes not charged by Aseptico.

Sales Tax Exemptions

Unless Aseptico is in possession of a validated exemption certificate prior to shipment, the customer must pay the entire invoice, including sales tax. Certificates can be emailed to AR@aseptico.com

International Customers

Most Aseptico products are CE-marked and Health Canada licensed. However, customers should verify the status of any specific item(s) with their sales representative or local distributor prior to finalizing the purchase. Please contact your local Aseptico distributor for pricing and availability.

Prices shown in the catalog are in US dollars. If you are unsure of the Aseptico distributor in your country, for specific ordering and payment policies, or for general product inquiries, please contact our International Sales Department at int@aseptico.com.

Aseptico, Inc.
8333 216th St. S.E.
Woodinville, WA 98072

Aseptico Product Recognition

What the Industry Is Saying

Aseptico® Products Have Been Recognized Multiple Times by leading dental industry publications for their innovation and preference for use by dental professionals. *Dentistry Today*, the leading US clinical magazine for dentists, recently recognized multiple Aseptico products including:

AMC-15 Mobile Dental Cart

- Nov/Dec 2022 – Reader's Choice Top 50 Technology Product
- Jan/Feb 2022 - Top Innovative Products



Aseptico
Trusted Worldwide



Aseptico® 7000 Series All-in-One Motor

- March 2022 – Reader's Choice Top 25 Implant Product
- April 2022 – Reader's Choice Top 25 Endodontic Product
- Top 25 Implant Product and Top 25 Endodontic Product for multiple years running!



AEU-5000 Electrical Operative Motor

- July/Aug 2021 - Annual Top 100 Products

For Value & Excellence GoAseptico!



Aseptico® Dental Motors are Made in America and Trusted Worldwide
For a Complete Listing of Aseptico® Industry Awards, Visit Aseptico.com

Aseptico, Inc.
8333 216th Street SE,
Woodinville, WA 98072



DENTAL MOTORS **WE POWER DENTISTRY**

MOBILE and PORTABLE DENTISTRY **MOVING TO MEET NEED**

GLOBAL DENTAL CATALOG **PROVEN PRODUCTS**

DENTAL EQUIPMENT OEM **EXCELLENCE IN ENGINEERING**

*Welcome to the
Aseptico 2023
Global Dental Catalog*

Aseptico proudly manufactures products at its headquarters in Woodinville, WA. Aseptico® products are fully regulatory compliant to US and international manufacturing and safety standards, including FDA Good Manufacturing Practices, ISO 60601-1, and ISO 13485. These certifications, and our commitment to quality, allow us to export to over 125 countries.

425.408.9347

[aseptico.com](https://www.aseptico.com)



Aseptico is located in Woodinville, Washington.